



Service Bulletin No. 1062

COACH MODEL	: T2100 Series
BULLETIN TYPE	: Service information
MANUAL & SECTION	: Refer to the procedure in this Bulletin
DATE	: January 31st, 2001
SUBJECT	: S1010C Spare Parts Manual update
TERMS & CONDITIONS	: No claims will be accepted with reference to this Bulletin.

DESCRIPTION :

Updates of several Spare Parts Manual 1010C sections have been released for distribution to end-users. Refer to the filing instructions on page 2 of this Bulletin and use the accompanying revised sections to keep your T2100 reference book up-to-date. Note that these sections will also be included in Spare Parts Manual 1010D, which is in the process of being compiled.

PROCEDURE :

To update manual S1010C: T2140, T2145 Spare Parts Manual, Chassis and Body

INSERT NEW...	BEHIND...
<ul style="list-style-type: none">• Section 611009-0318 Date Mar 17, 00• Section 621209-2124 Date Oct 15, 99• Section 622009-0249 Date Jun 8, 99 (2 pages)• Section 622009-0250 Date Oct 15, 99 (2 pages)• Section 622309-0332 Date Apr 26, 00 (2 pages)• Section 642008-0122 Date Apr 11, 00• Section 642208-0069 Date Apr 11, 00• Section 733409-5211 Date Mar 20, 00	<ul style="list-style-type: none">• Section 611009-0314 Date Oct 29, 99• Section 621209-2088 Date Oct 29, 99• Section 622009-0211 Date Oct 29, 99• Section 622009-0249 Date Apr 10, 00 (2 pages)• Section 622309-0268 Date Oct 29, 99• Section 642008-0121 Date Oct 29, 99• Section 642208-0068 Date Oct 29, 99• Section 733409-5204 Date Oct 29, 99

DELETE OBSOLETE...	INSERT NEW...
<ul style="list-style-type: none">• Section 642008-0113 Date Oct 29, 99• Section 642106-0091 Date Oct 29, 99• Section 642208-0067 Date Oct 29, 99	<ul style="list-style-type: none">• Section 642008-0113 Date Apr 11, 00• Section 642106-0091 Date Mar 22, 00• Section 642208-0067 Date Apr 11, 00


Procedure complete.

MOTOR

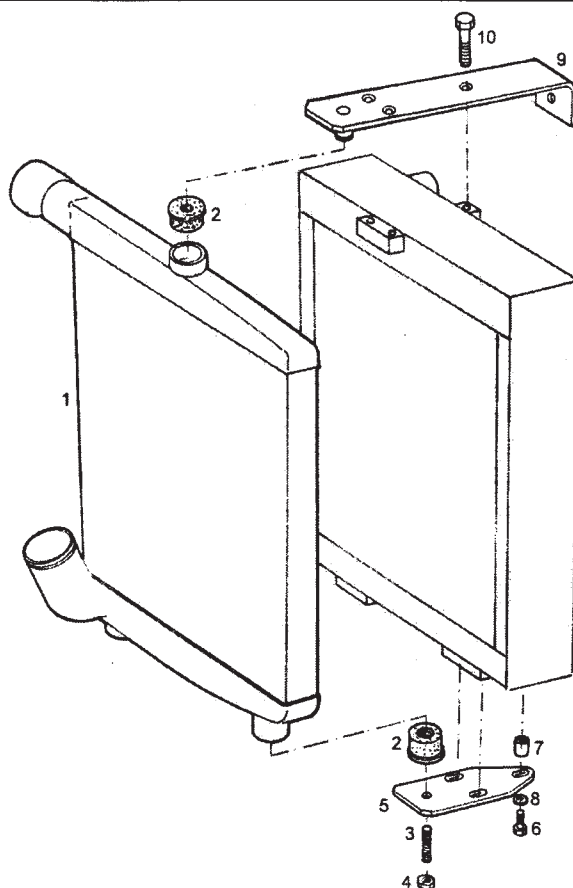
ENGINE : CUMMINS ISM 400Pk w/ JAKE BRAKE

MOTOR

T2140 VIN 40132 - VIN 40144 with Holset compressor VIN 40145- with Wabco compressor
 T2145 VIN 43378 - VIN 44051 with Holset compressor VIN 44052- with Wabco compressor

Pos.	Q.	Ref.N°	Description	Denominación	Spec.
1	1	10665076	Engine	Motor	ISM 400PK
			Engine	w/ Jake Brake 17-3-2000	
			Motor	B	611009-0318

THIS PAGE HAS BEEN LEFT BLANK INTENTIONALLY



Pos.	Q.	Ref.N°	Description	Denominación	Spec.
1	1	10566678	Intercooler	Refrigeración de aire de admisión	
2	3	10567773	Silentbloc	Silentbloc	
3	2	10583461	Stud bolt	Pasador	
4	2	660203403	Nut	Tuerca	DIN 934 M12x1.50
5	2	10682591	Bracket	Soporte	
6	6	660224801	Screw	Tornillo	DIN 933 M10x45 K=8.8
7	6	10583496	Bush	Casquillo	
8	6	660634625	Plain washer	Arandela plana	DIN 125 A10,5
9	1	10682589	Bracket	Soporte	
10	3	660224408	Screw	Tornillo	DIN 933 M10x1.5x25



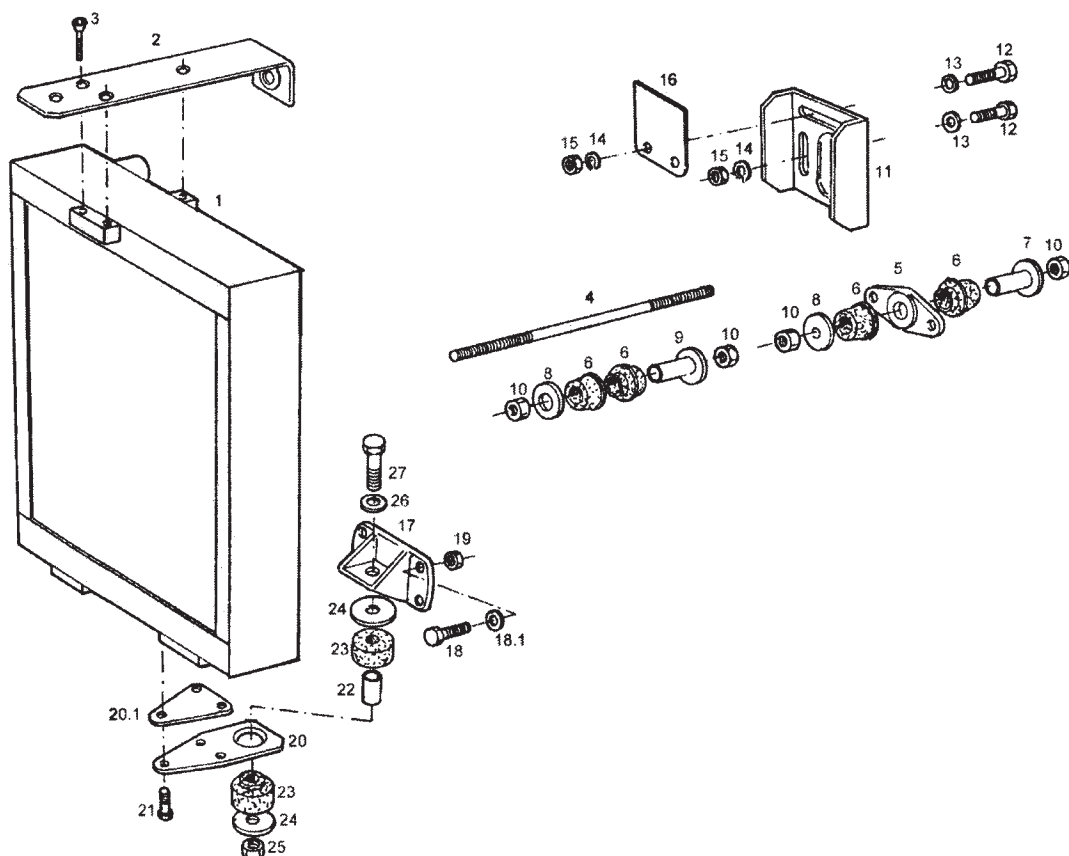
Air intake system

15-10-1999

Sistema de admisión

621209-2124

THIS PAGE HAS BEEN LEFT BLANK INTENTIONALLY



Pos.	Q.	Ref.N°	Description	Denominación	Spec.
1	1	10684376	Radiator	Radiador	
2	1	10682589	Bracket	Soporte	
3	3	660224402	Screw	Tornillo	DIN 933 M10x25 K=8.8
4	#m	660640600	Bar	Barra	M10
5	1	10574749	Fastener	Fijación	
6	4	10581374	Silentbloc	Silentbloc	
7	1	10581371	Bush	Casquillo	
8	2	10581372	Ring	Anillo	
9	1	10581415	Bush	Casquillo	
10	4	660203301	Nut	Tuerca	DIN 934 M10x1,50
11	1	10531934	Fastener	Fijación	
12	4	660224501	Screw	Tornillo	DIN 933 M10x30
13	4	660627920	Plain washer	Arandela plana	DIN 125 A10,5x21x2
14	4	660636500	Lock washer	Arandela elástica	DIN 127 A10
15	4	660203301	Nut	Tuerca	DIN 934 M10x1,50
16	1	10655659	Bracket	Soporte	
17	2	10551041	Bracket	Soporte	
18	8	660224501	Screw	Tornillo	DIN 933 M10x30
18.1	8	660634625	Plain washer	Arandela plana	DIN 125 A10,5
19	8	660207106	Lock nut	Tuerca de frenado	DIN 980 M10x1,50 K=8
20	2	10567624	Bracket	Soporte	
20.1	2	10624076	Plate	Placa	
21	6	660224301	Screw	Tornillo	DIN 933 M10x20
22	2	611400330	Bush	Casquillo	Ø18x14,5x64,5
23	4	621400080	Silentbloc	Silentbloc	

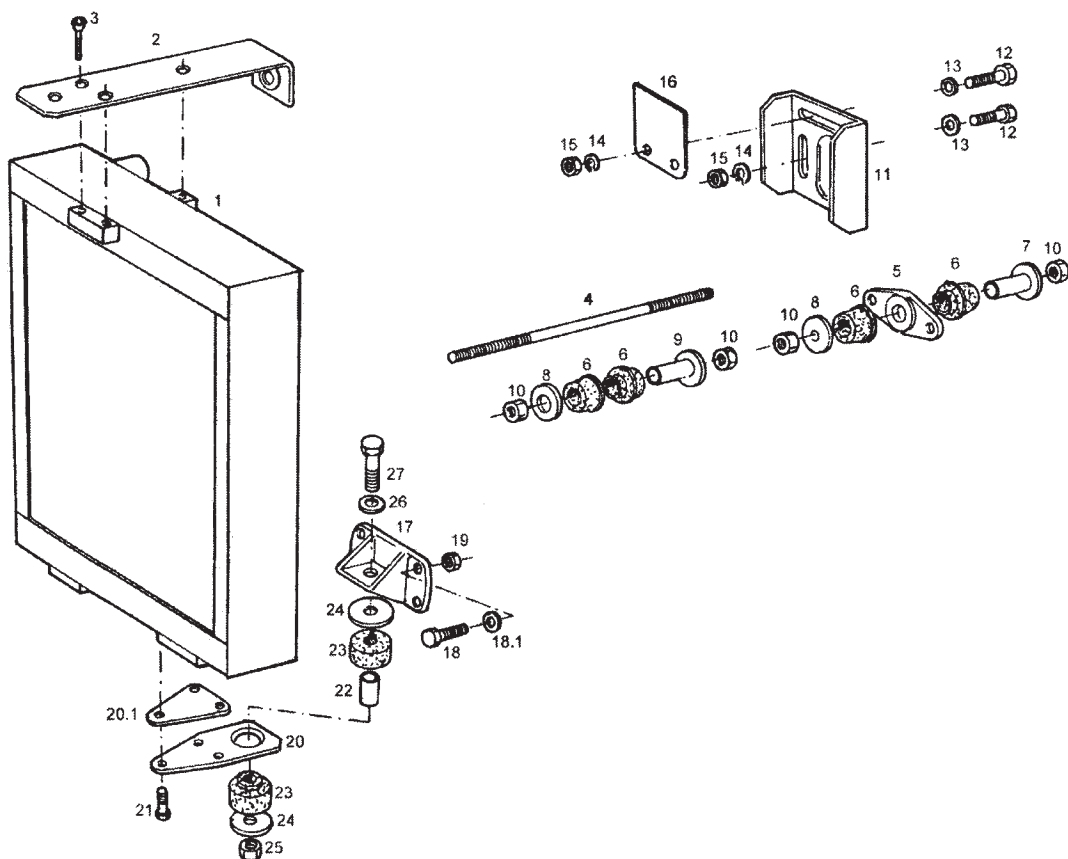


Radiator

8-6-1999

Radiador

622009-0249



Pos.	Q.	Ref.N°	Description	Denominación	Spec.
24	4	611400310	Ring	Anillo	Ø14,5x60x4,0
25	2	660207206	Lock nut	Tuerca de frenado	DIN 980 M14x2,00 K=8
26	2	660628007	Plain washer	Arandela plana	DIN 9021 A10.5
27	2	660248101	Screw	Tornillo	DIN 931 M14x110 K=8.8

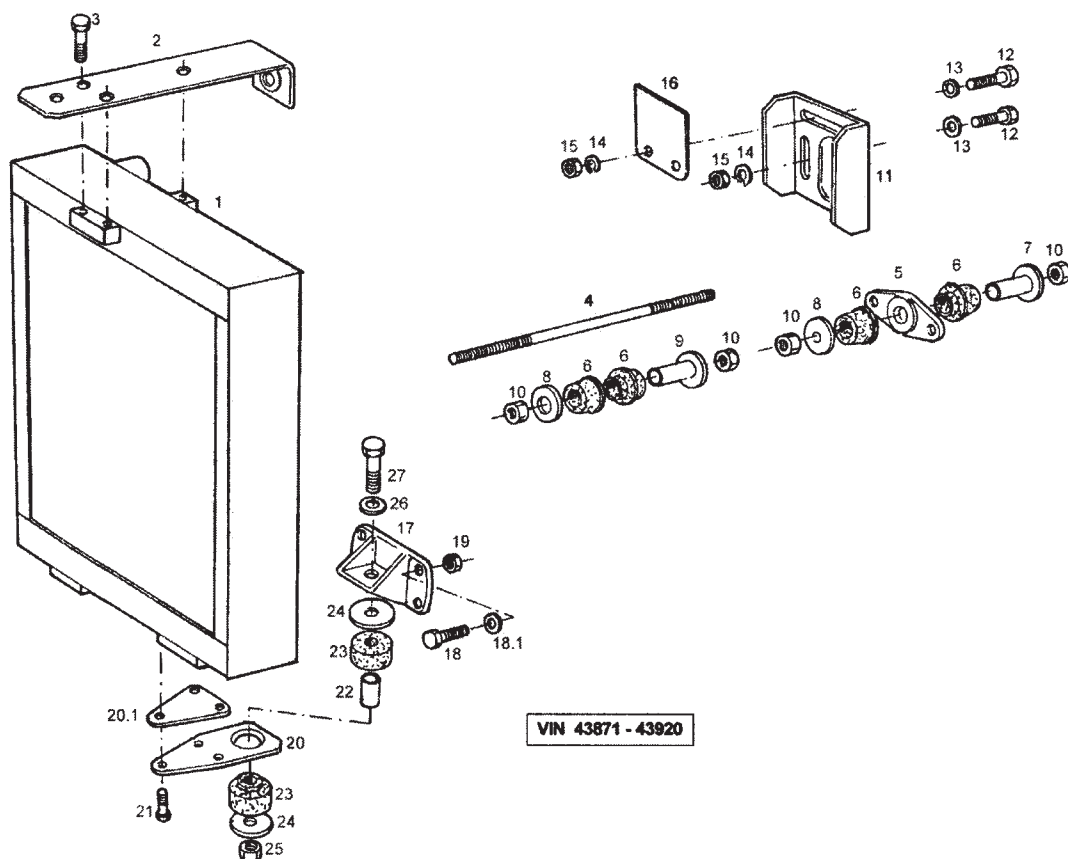


Radiator

Radiador

8-6-1999

622009-0249



Pos.	Q.	Ref.N°	Description	Denominación	Spec.
1	1	10682691	Radiator	Radiador	
2	1	10682589	Bracket	Soporte	
3	3	660224401	Screw	Tornillo	DIN 933 M10x25
4	#175	660640601	Bar	Barra	DIN 975 M10
5	1	10574749	Fastener	Fijación	
6	4	10581374	Silentbloc	Silentbloc	
7	1	10581371	Bush	Casquillo	
8	2	10581372	Ring	Anillo	
9	1	10581415	Bush	Casquillo	
10	4	660203301	Nut	Tuerca	DIN 934 M10x1,50
11	1	10531934	Fastener	Fijación	
12	4	660224501	Screw	Tornillo	DIN 933 M10x30
13	4	660634625	Plain washer	Arandela plana	DIN 125 A10,5
14	4	660636500	Lock washer	Arandela elástica	DIN 127 A10
15	4	660203301	Nut	Tuerca	DIN 934 M10x1,50
16	1	10655659	Bracket	Soporte	
17	2	10551041	Bracket	Soporte	
18	8	660224501	Screw	Tornillo	DIN 933 M10x30
18.1	8	660634625	Plain washer	Arandela plana	DIN 125 A10,5
19	8	660207106	Lock nut	Tuerca de frenado	DIN 980 M10x1,50 K=8
20	2	10567624	Bracket	Soporte	
20.1	2	10624076	Plate	Placa	
21	6	660224301	Screw	Tornillo	DIN 933 M10x20
22	2	611400330	Bush	Casquillo	Ø18x14,5x64,5
23	4	621400080	Silentbloc	Silentbloc	

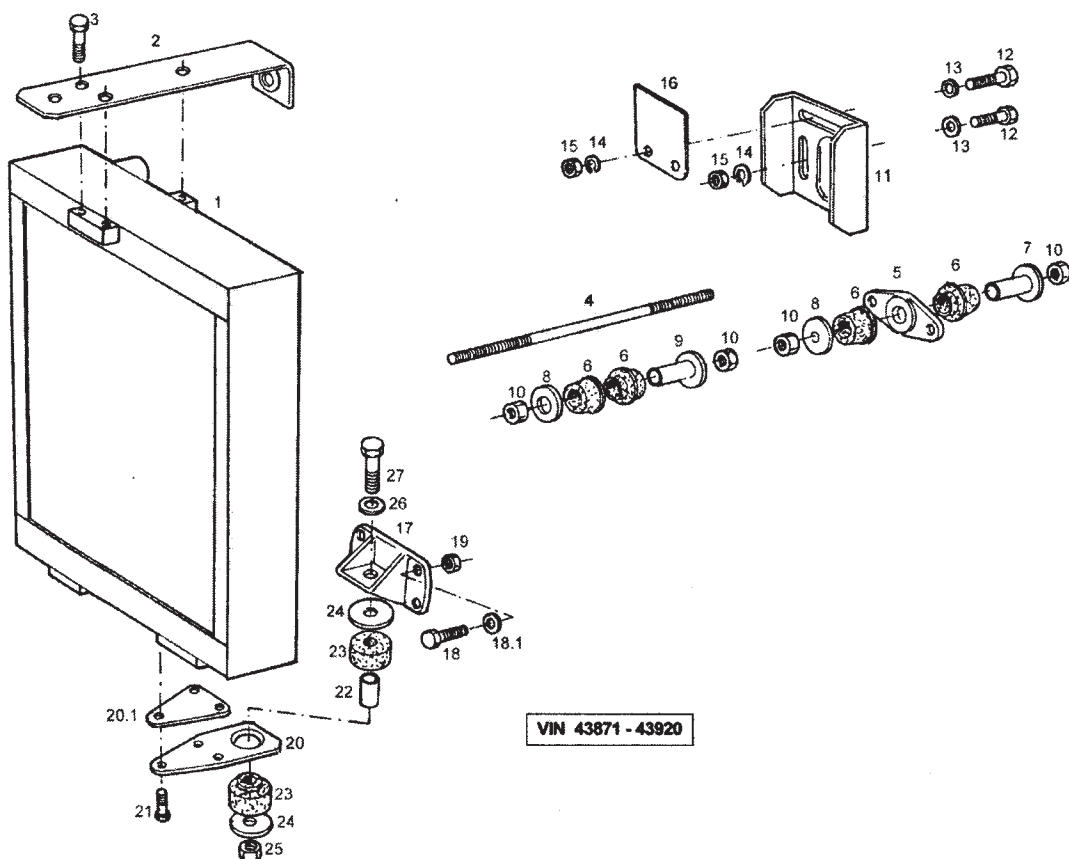


Radiator

15-10-1999

Radiador

622009-0250



Pos.	Q.	Ref.N°	Description	Denominación	Spec.
24	4	611409600	Spacer ring	Anillo separador	Ø60x10
25	2	660207209	Lock nut	Tuerca de frenado	DIN 980 M14x1,50 K=8
26	2	660628814	Plain washer	Arandela plana	DIN 9021 A10.5x30x2.5
27	2	660248101	Screw	Tornillo	DIN 931 M14x110 K=8.8

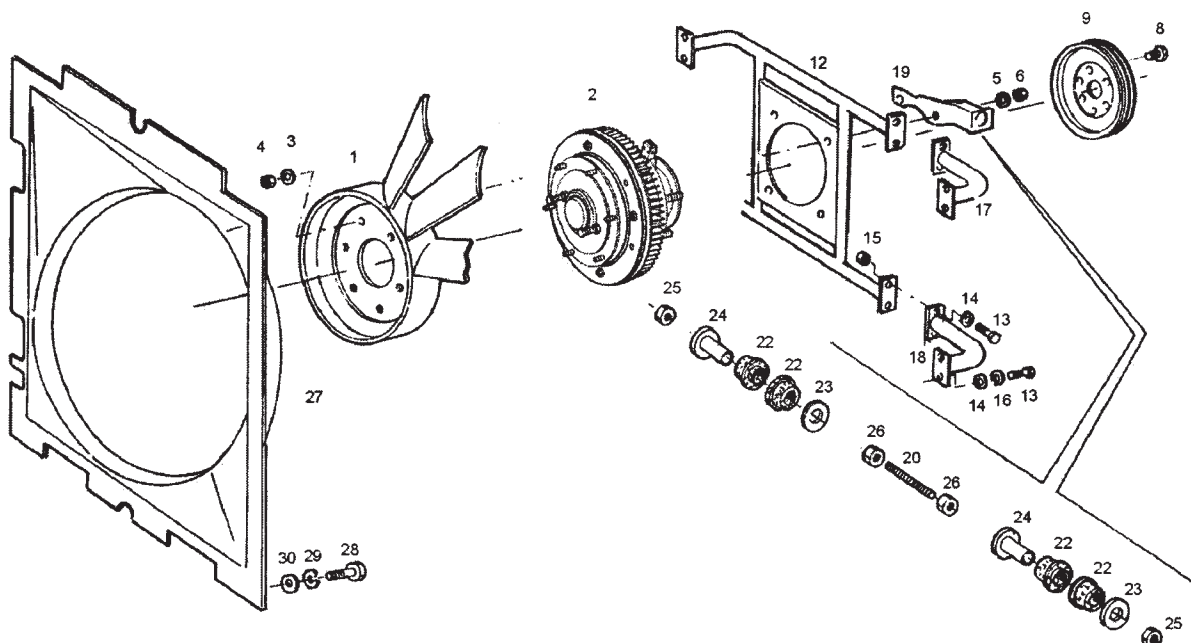


Radiator

Radiador

15-10-1999

622009-0250



Pos.	Q.	Ref.N°	Description	Denominación	Spec.
1	1	10573306	Fan	Ventilador	
2	1	10680752	Clutch	Embrague	
3	6	660625800	Plain washer	Arandela plana	DIN 125 A8.4x17x2
4	6	660203201	Nut	Tuerca	DIN 934 M8x1.25
5	4	660634625	Plain washer	Arandela plana	DIN 125 A10,5
6	4	660203302	Nut	Tuerca	DIN 934 M10
8	6	660222203	Screw	Tornillo	DIN 933 M8x16
9	1	10679846	Belt pulley	Polea de correa	
12	1	10679842	Bracket	Soporte	
13	12	660224401	Screw	Tornillo	DIN 933 M10x25
14	12	660634625	Plain washer	Arandela plana	DIN 125 A10,5
15	4	660207106	Lock nut	Tuerca de frenado	DIN 980 M10x1,50 K=8
16	8	660636500	Lock washer	Arandela elástica	DIN 127 A10
17	1	10682674	Bracket	Soporte	
18	1	10682673	Bracket	Soporte	
19	1	10679856	Bracket	Soporte	
20	240mm	660640601	Bar	Barra	DIN 975 M10
22	4	10581374	Silentbloc	Silentbloc	
23	2	10581372	Ring	Anillo	
24	2	10581371	Bush	Casquillo	
25	2	660207106	Lock nut	Tuerca de frenado	DIN 980 M10x1,50 K=8
26	2	660203301	Nut	Tuerca	DIN 934 M10x1,50
27	1	10682787	Fan cowling	Deflector del ventilador	
28	12	660220111	Screw	Tornillo	DIN 933 M6x12
29	12	660636300	Lock washer	Arandela elástica	DIN 127 Ø6

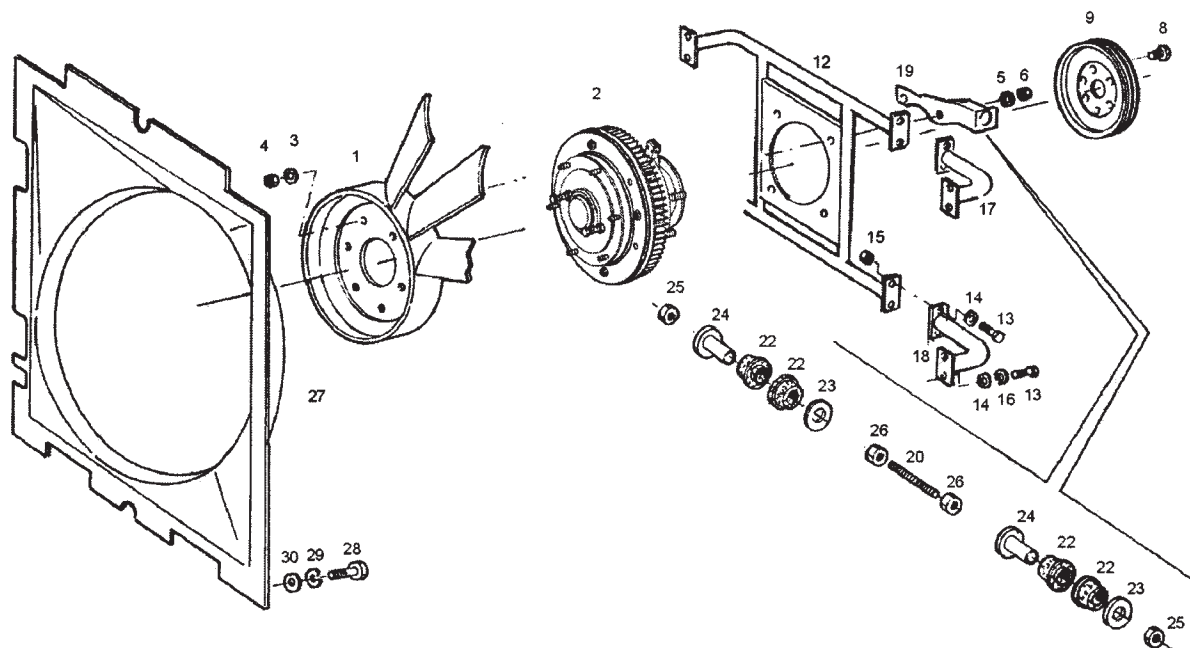


Fan

Ventilador

26-4-2000

622309-0332



Pos.	Q.	Ref.N°	Description	Denominación	Spec.
30	12	660623500	Plain washer	Arandela plana	DIN 125 6,4x12x1,5

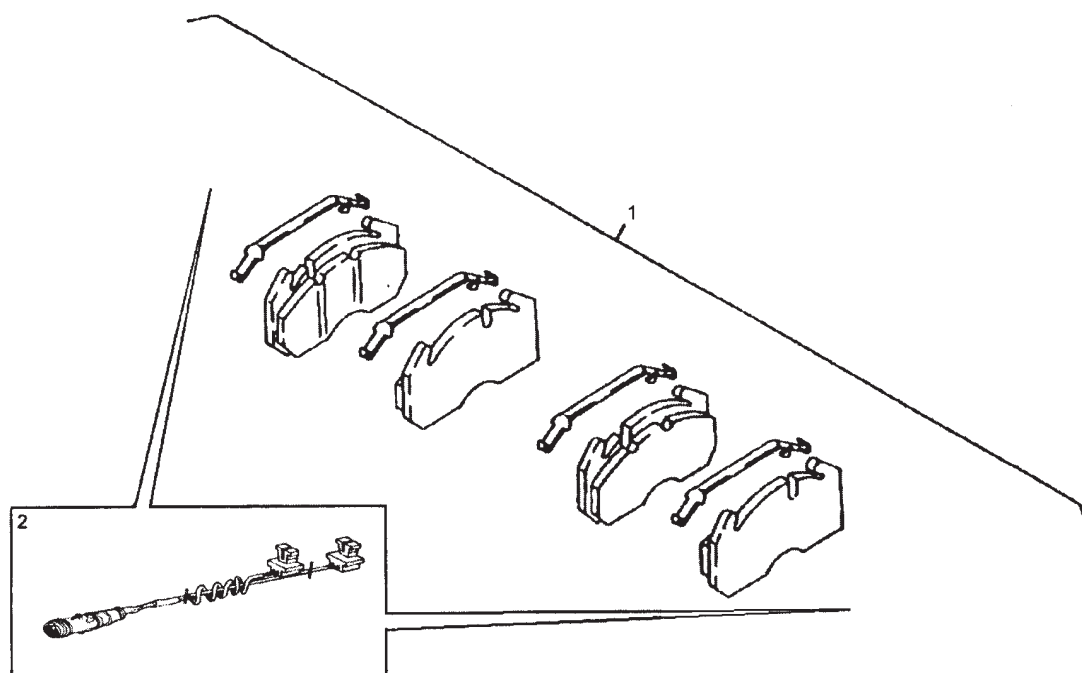


Fan

Ventilador

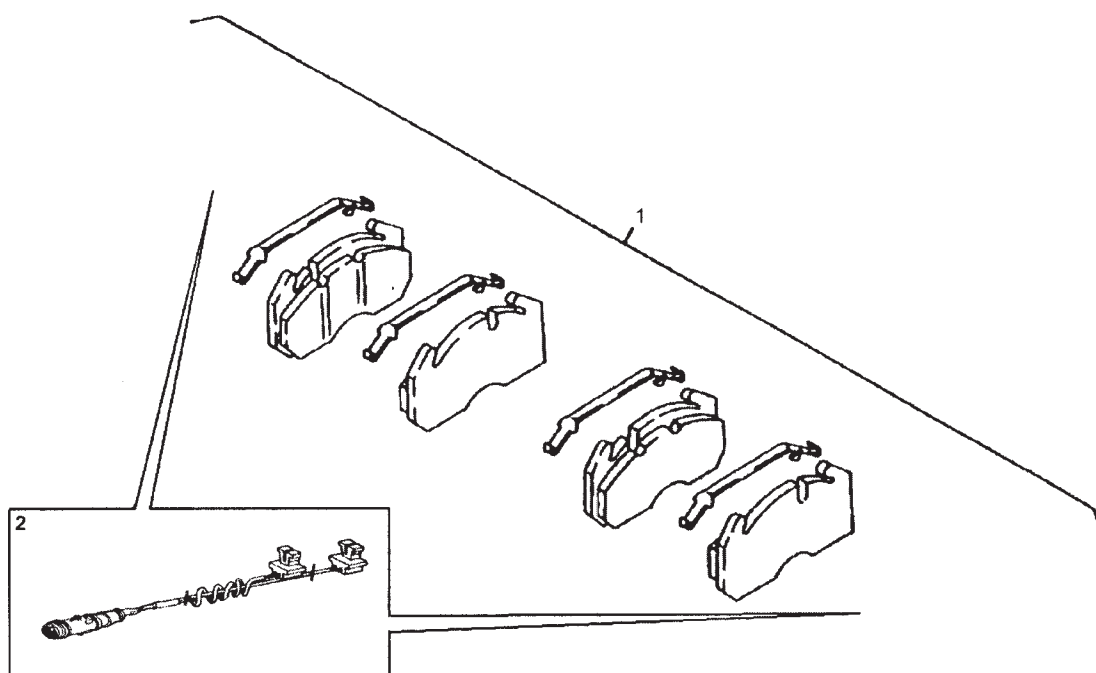
26-4-2000

622309-0332



Pos.	Q.	Ref.N°	Description	Denominación	Spec.
1	1	N508206016	Set of brake pads	Juego de pastillas de freno	
2	2	N508226011	Sensor	Emisor	
VANHOOL Front axle: brakes Eje delantero: frenos					2001-01-29 A 642008-0122

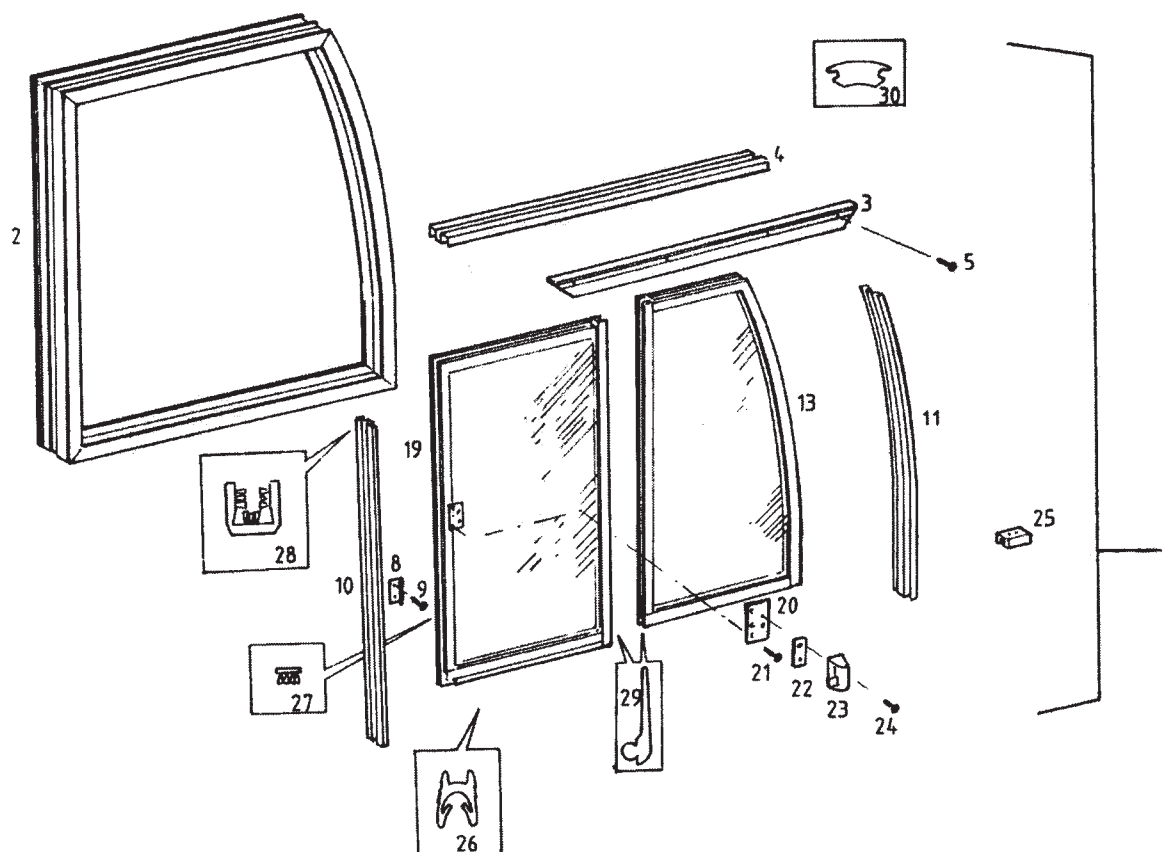
THIS PAGE HAS BEEN LEFT BLANK INTENTIONALLY



Pos.	Q.	Ref.N°	Description	Denominación	Spec.
1	1	N508206016	Set of brake pads	Juego de pastillas de freno	
2	2	N508226011	Sensor	Emisor	
Trailer axle: brakes Eje arrastrado: frenos					2001-01-29 A 642208-0069



THIS PAGE HAS BEEN LEFT BLANK INTENTIONALLY



Pos.	Q.	Ref.N°	Description	Denominación	Spec.
1	1	10702262	Sliding window, with glass	Marco corredero, con cristal	
2	*1	10660767	Sliding window frame	Ventana corredera	
3	**1	10660744	Aluminium section	Perfil de aluminio	
4	**1	10660745	Aluminium section	Perfil de aluminio	
5	**4	660280702	Screw	Tornillo	DIN 963 M4 X 10
8	**1	10517418	Cam	Leva	
9	**2	660280601	Screw	Tornillo	DIN 963 M4x6
10	**1	10660746	Aluminium section	Perfil de aluminio	
11	**1	10660748	Aluminium section	Perfil de aluminio	
13	*1	10705851	Glass, double glazing	Cristal, acristalamiento doble	
19	*1	10660777	Sliding glass, with accessories	Cristal corredero, con accesorios	
20	**1	10586894	Mounting plate	Plancha de montaje	
21	**3	660280601	Screw	Tornillo	DIN 963 M4x6
22	**1	10630413	Spacer	Separador	MAT:R
23	**1	10594896	Lock	Cierre	
24	**2	10585998	Screw	Tornillo	DIN 965 M4x6 MAT:IN
25	*1	10658591	Stop	Tope	MAT:P 75x10x9
26	*#m	660077401	Profile	Perfil	MAT:P
27	*#m	660053511	Profile	Perfil	MAT:P
28	*#m	660053509	Profile	Perfil	MAT:P
29	*#m	660054013	Rubber section	Perfil de caucho	
30	*#m	660057010	Rubber section	Perfil de caucho	

VANHOOL

Sliding window frame

20-3-2000

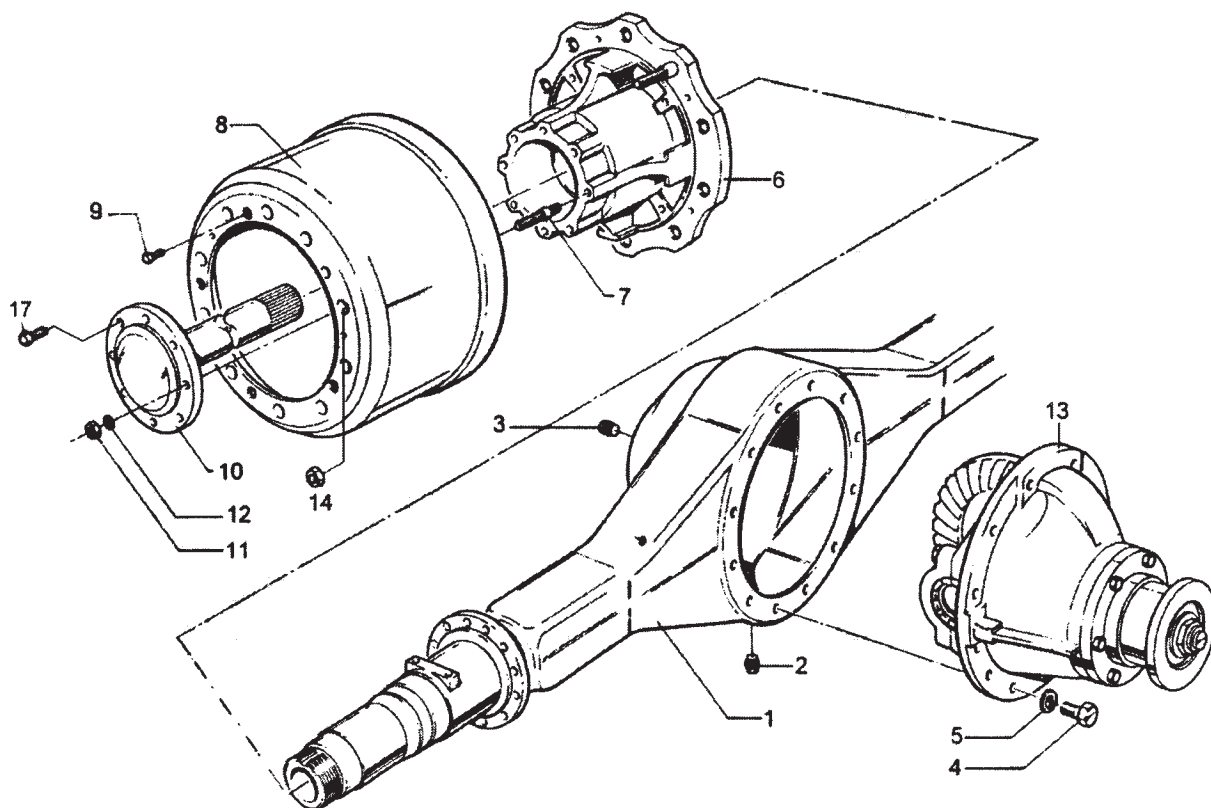
Ventana corredera

A

733409-5211

THIS PAGE HAS BEEN LEFT BLANK INTENTIONALLY

THIS PAGE HAS BEEN LEFT BLANK INTENTIONALLY



Pos. 17 could replace pos. 7 , 11 , 12

Pos.	Q.	Ref.N°	Description	Denominación	Spec.
1	1	10620913	Housing	Caja	Re Li M16x2
2	1	632502848	Screw-in plug	Tornillo de obturación	
3	1	10593603	Screw-in plug	Tornillo de obturación	
4	12	10558132	Screw	Tornillo	
5	12	632502880	Ring	Anillo	
6	2	10558142	Hub	Cubo	
7	16	10558153	Stud bolt	Pasador	
8	2	10593609	Brake drum	Tambor de freno	
9	10	10593611	Screw	Tornillo	
10	1	10617619	Axle shaft	Eje de rueda	
10	1	10617618	Axle shaft	Eje de rueda	
11	16	632502889	Nut	Tuerca	
12	16	632502880	Ring	Anillo	
13	1	10617157	Differential	Diferencial	
14	20	»645009....	Wheel	Rueda	
15	1	10619527	Vent	Respiradero	
16	1	10674453	Hose	Tubo flexible	
17	16	10705043	Screw	Tornillo	
(i)			10705043 pos 17. can replace pos 7, 11, 12	10705043 pos. 17 puede sustituir nos. 7, 11, 12	



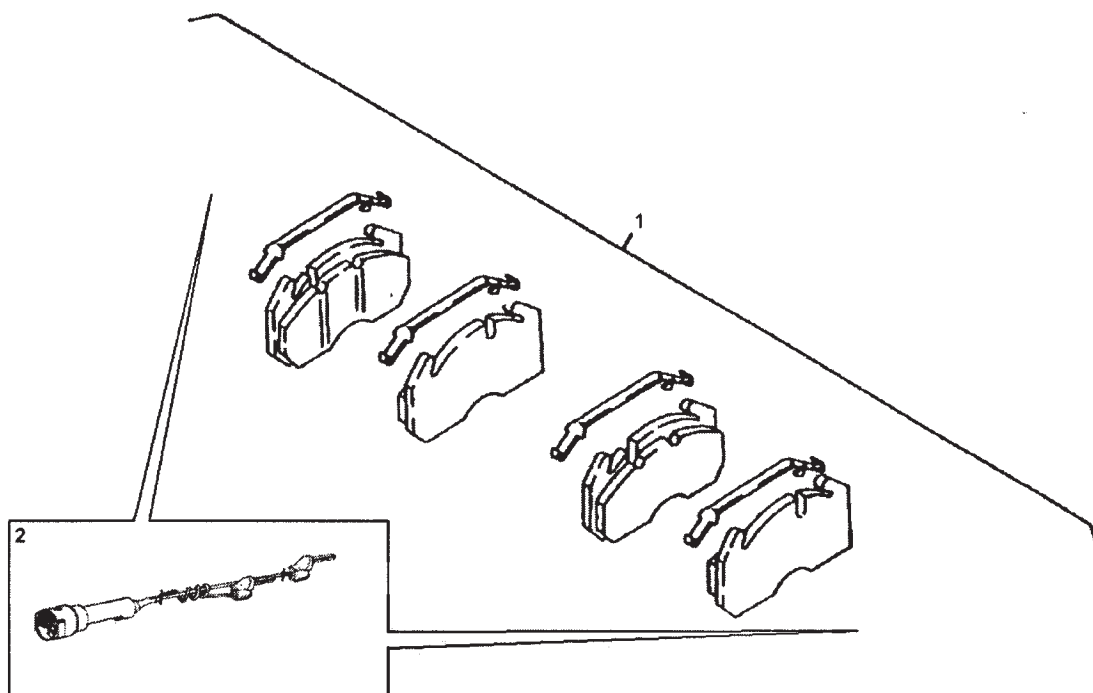
Drive axle: differential

Eje motor: diferencial

825978
22-3-2000

N 642106-0091

THIS PAGE HAS BEEN LEFT BLANK INTENTIONALLY



Pos.	Q.	Ref.N°	Description	Denominación	Spec.
1	1	10714240	Set of brake pads	Juego de pastillas de freno	
6	2	N508110004	Sensor	Emisor	



Trailer axle: brakes

11-4-2000

Eje arrastrado: frenos

A

642208-0067

THIS PAGE HAS BEEN LEFT BLANK INTENTIONALLY