



# SERVICE BULLETIN No.1135

Circulate to listed addressees

<b>COACH MODEL</b>	: T2145 and C2045
<b>BULLETIN TYPE</b>	: Service Information
<b>MANUAL &amp; SECTION</b>	: Operator's Guide Book: Section 3 - Accessories Spare Parts Manual: Section 747109 - Seats
<b>PARTS BOOK REVISION</b>	: Yes
<b>DATE</b>	: March 30, 2004
<b>SUBJECT</b>	: <b>Slider seats - operation</b>
<b>TERMS &amp; CONDITIONS</b>	: No claims will be accepted with reference to this Bulletin.

## **APPLICATION:**

The new slider seats have been cut into production as from the units shown below:

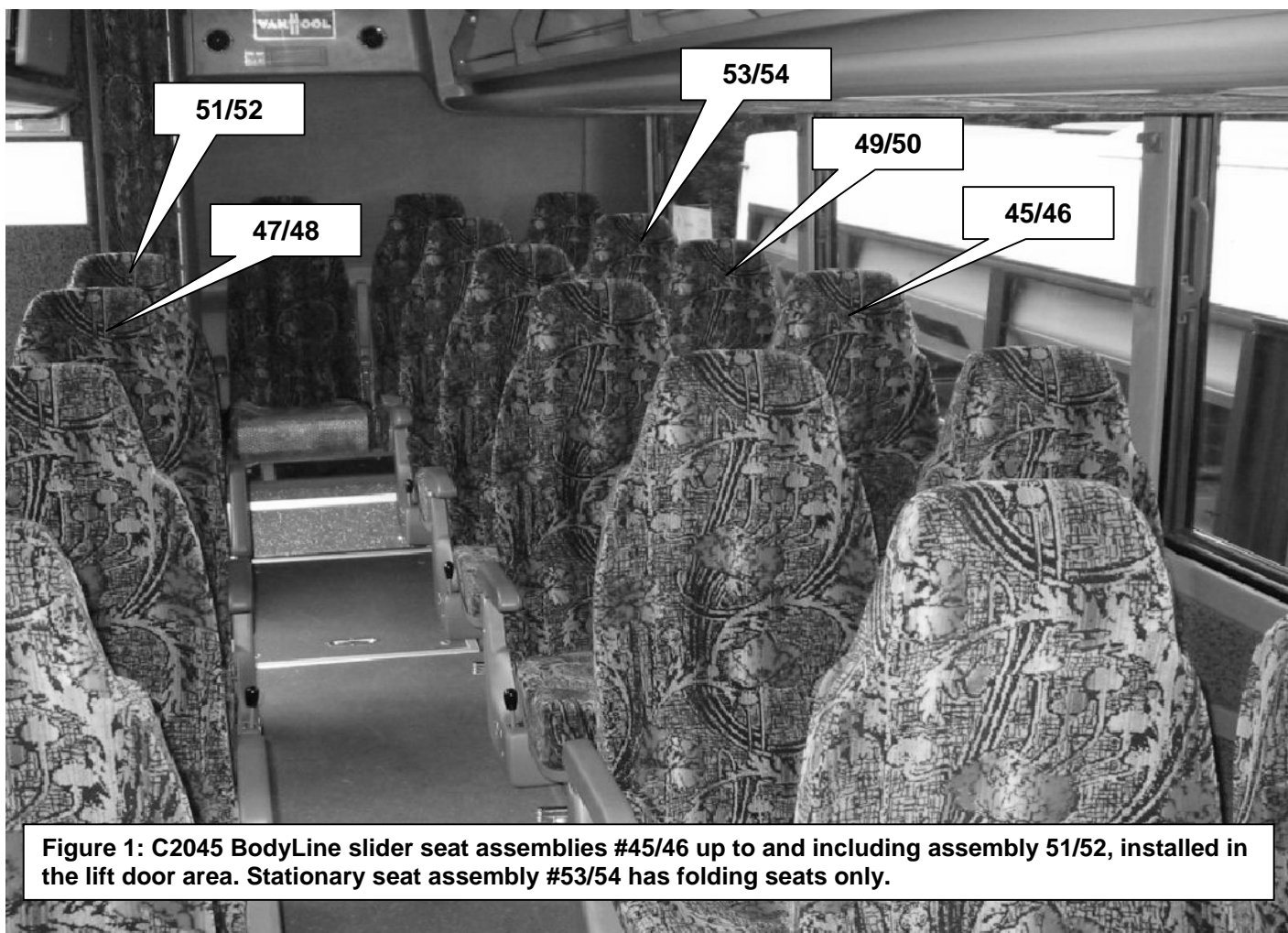
<b>Model</b>	<b>Engine</b>	<b>VIN</b>
T2145	Cummins	N/A
	Detroit Diesel	45832 →
C2045	Cummins	N/A
	Detroit Diesel	44617 →

## **DESCRIPTION:**

- New, optional Body Line slider seats have been made available for coaches equipped with an ADA platform lift. These seats, which are installed in the lift door area, feature a quick release locking device, which allows them to be moved back and forth in a minimum of time and with a minimum effort to make room for (a) wheelchair(s). Also, they have been designed such, that they can be locked in any desired position along the floor runners.
- Refer to the procedure further in this Bulletin for operating instructions.
- For the actual slider seating arrangement, refer to Figure 1 overleaf.

*Service personnel: please read, initial and circulate.*

<b>Service Manager</b>	<b>Parts Manager</b>	<b>Warranty Administrator</b>	<b>Workshop Foreman</b>	<b>Service Technician</b>



## **PARTS AND PRODUCTS:**

### **New parts**

<b>Part No.</b>	<b>Description</b>	<b>Seats #</b>	<b>Qty.*</b>
VH 10859882	Two-seat assembly, slider, RH, frame	47/48, 51/52	2
VH 10862898	Two-seat assembly, slider, RH, seats	47/48, 51/52	2
VH 10864329	Two-seat assembly, slider, LH, frame	45/46, 49/50	2
VH 10862899	Two-seat assembly, slider, LH, seats	45/46, 49/50	2
VH 10864329	Two-seat assembly, stationary, folding seats only, frame	53/54	1
VH 10868739	Two-seat assembly, stationary, folding seats only, seats	53/54	1

\*Quantities per coach

- Slider seat assemblies can be ordered with cushions in any fabric color of the Body Line range.
- New parts will be included in the next Spare Parts Manual update.
- Parts may be purchased from your nearest ABC Customer Care & Parts Source dealership.
- Parts and products disposition: discard according to applicable environmental regulations.

## **PROCEDURE:**

### **1. General:**

- The time required to stow away all seat assemblies is approximately 0.2 hours.

- This job can be executed by the coach driver.

## 2. **Special tools, equipment or services:**

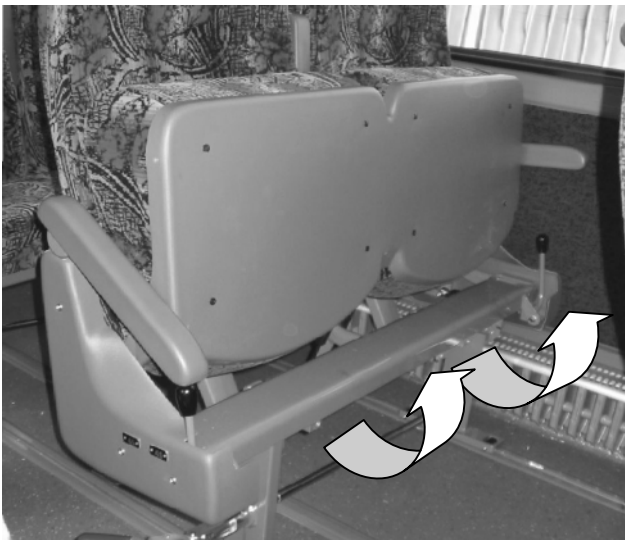
- No special tools, equipment or services are required.

## 3. **Preparations:**

- Park the coach on a level surface with the front wheels straight.  
Apply the parking brake.  
Switch on the dash wheel chair switch to set the lift interlock.
- Read the entire procedure and the sidebar on page 6 of 8 before beginning to work.

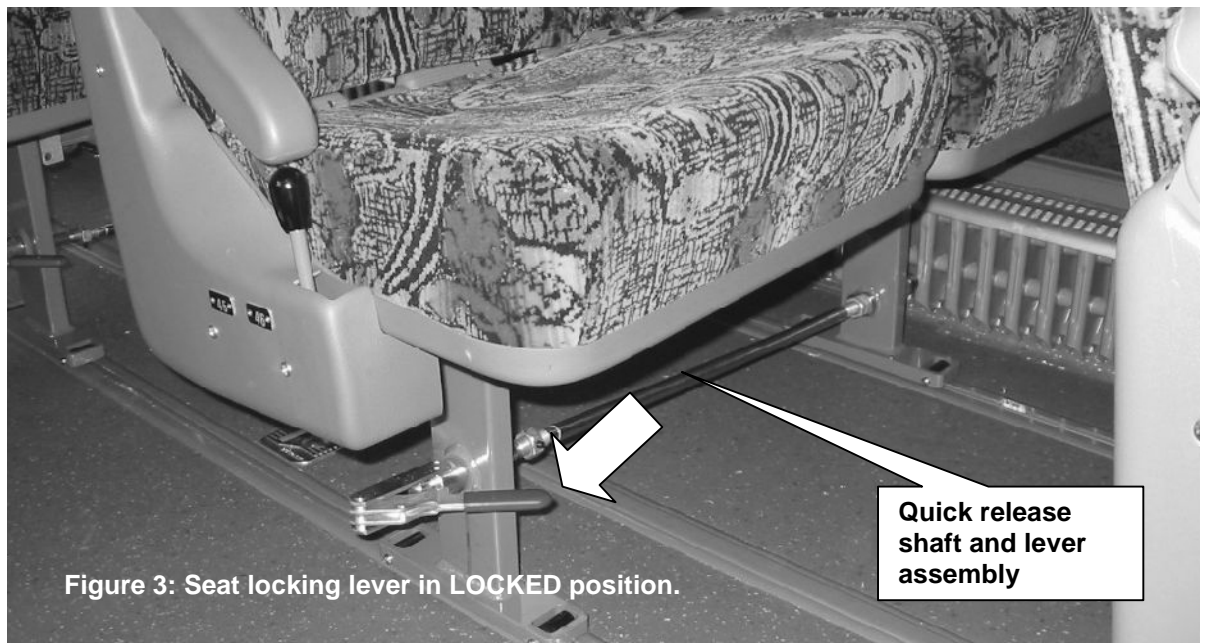
## 4. **To stow away the slider seat assemblies:**

- 1) Pull-up the seat cushions (see Figure 2).

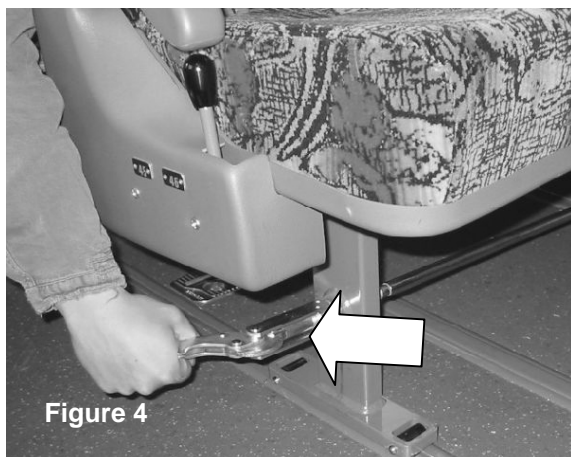


**Figure 2: Seat cushions pulled up**

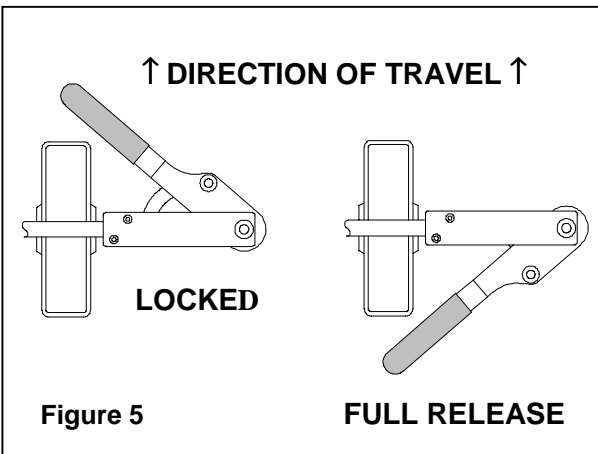
- 2) Unlatch the shaft and lever assembly connecting the seat pedestals by pulling back the lever (see Figure 3) to the full-stop position (see Figures 4 and 5). The seats are kept upright by sliding anchors in the runners.



**Figure 3: Seat locking lever in LOCKED position.**



**Figure 4**



**Figure 5**

**FULL RELEASE**

**Figures 4 and 5: Pulling the seat locking lever towards the FULL RELEASE position.**

- 3) Slide the seat assembly forward until it touches the assembly ahead, which is secure in the runners (see Figure 6). The slider seat pedestals are provided with rollers for easy moving.



**Figure 6: Seat with seat cushions pulled up and touching secure seat ahead**

- 4) Secure the slider seat assembly by pulling the locking lever forward (see Figure 7).



**Figure 7: Securing a slider seat assembly**

- 5) Proceed likewise for the other slider seat assemblies.
- 6) Pull-up the seat cushions of seat assembly #53/54.  
Now there is sufficient room to properly install and lash (a) wheelchair(s) (see Figure 8).



**Figure 8: Seat assembly #53/54  
with seat cushions folded up**

**5. To re-install the slider seat assemblies for the original seating arrangement:**

- 1) Fold-down the seat cushions of seat assembly #53/54.
- 2) Unlatch seat assembly #49/50.
- 3) Slide the seat assembly back to its original position.
- 4) Lock the seat assembly.
- 5) Proceed likewise for the other slider seat assemblies.

**6. To adjust the pull-rod:**

- 1) The clamping force on the seat pedestals can be increased/decreased by means of two adjuster nuts (see Figure9). Proceed as follows:
- 2) With the seat locking lever in the fully locked position, adjust the hinged pedestal road side adjuster nut to obtain full clamping force onto the runners. Secure the nut.
- 3) Put the seat locking lever in the full release position. Check the seat assembly to slide freely in the runners.
- 4) If the seat assembly does not slide freely, adjust rod length as necessary. Secure all nuts.

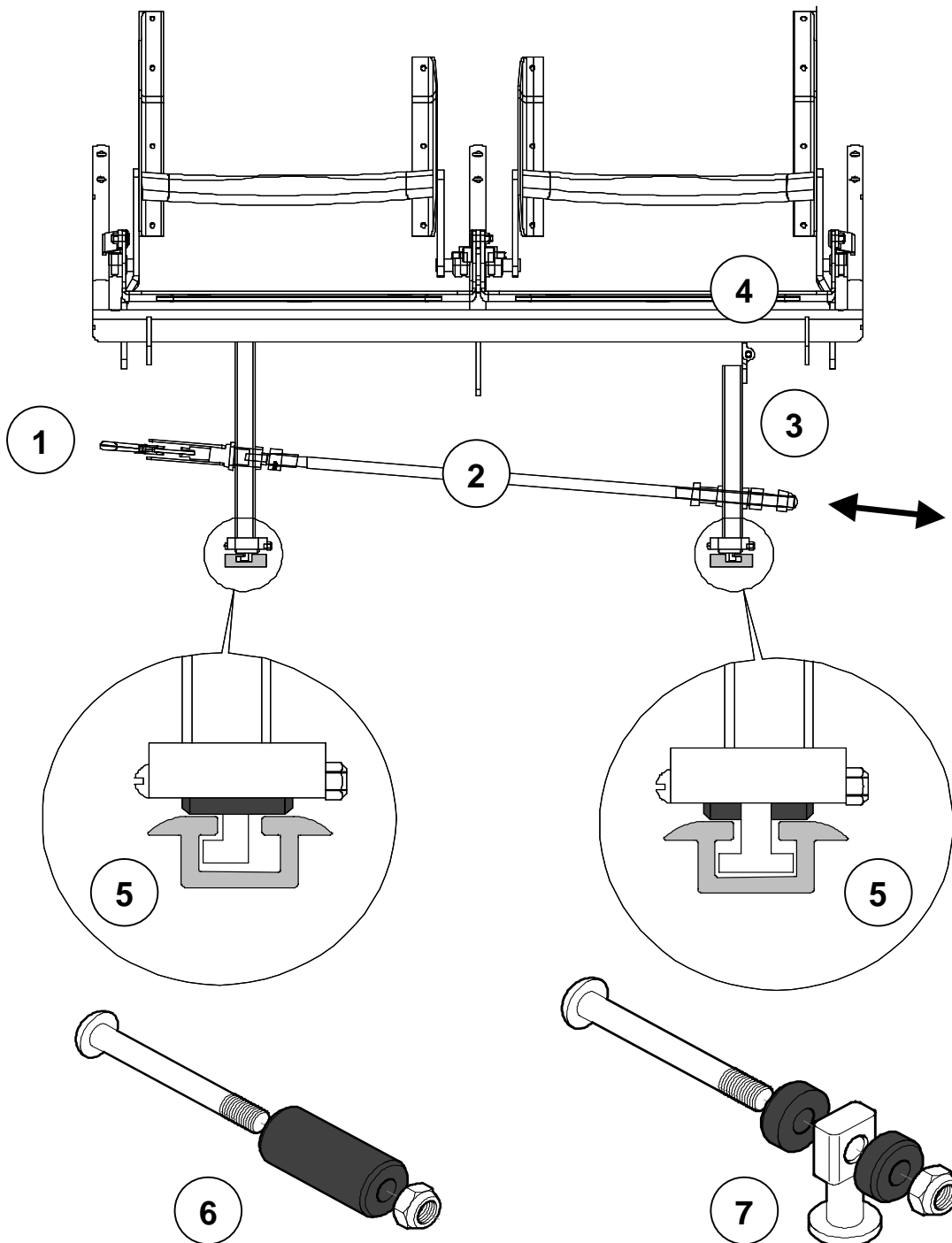


**Figure 9: Clamping force adjuster  
nuts**

*Procedure complete.*

### **Sidebar: Van Hool slider seat assemblies – how they work**

By moving the seat locking lever (1) from the locked position to full release, or visa versa, the push/pull rod (2) is lengthened/shortened by the cam located within the lever, making the roadside pedestal (3) rotate about its hinge (4), thus securing/releasing it and allowing both pedestals to either slide in the seat track runners (5) or be clamped stationary. Rollers fore and aft of each pedestal (6) provide for effortless sliding of the assembly. While the assembly is being handled, it remains positively secured in the runners by sliding anchors (7).



**DISCLAIMER:**

The procedures contained herein are not exclusive. Van Hool cannot possibly know, evaluate, or advise the transportation industry of all conceivable ways in which a procedure may be undertaken or of the possible consequences of each such procedure. Other procedures may be as good, or better, depending upon the particular circumstances involved.

Each carrier who uses the procedures herein must first satisfy itself thoroughly that neither the safety of its employees or agents, nor the safety or usefulness of any products, will be jeopardized by any procedure selected.

**SERVICE INFORMATION:**

Service Bulletins are issued to supplement or supersede information in the Van Hool manuals. Note Service Bulletin number, date and subject on the register at the end of the relevant chapter(s). File Service Bulletin separately for future reference.

**THIS PAGE HAS BEEN LEFT BLANK INTENTIONALLY**