

ADDRESSEES	: Refer to 'Application'
COACH/BUS MODEL	: C2045 Series
BULLETIN TYPE	: Field Change Program
SECTION/CHAPTER	: Section 10 – HVAC Chapter 8.6 Climate control – Airside systems
DATE	: January 3, 2007
SUBJECT	: New folding air filter for driver's front unit
TERMS & CONDITIONS	: Refer to the Warranty Information in this Bulletin.

APPLICATION:

The Field Change Program subject of this Bulletin is applicable to following units:

Model	Engine	VIN
C2045	Cummins	45458 → 45500, 46001 → 46018, 46025
	Detroit Diesel	46531 → 46621, 46624, 46634 → 46638, 46640 → 46641, 46643, 46646, 46648
	Caterpillar	47001 → 47055, 47057 → 47058, 47060, 47066 → 47093, 47095 → 47105, 47119 → 47120, 47129

DESCRIPTION:

Ref.: Carrier/Sütrak Technical Bulletin #GB 06-002 (see attachment).

1. The above-mentioned units have been equipped with a Carrier/Sütrak Generation III front unit (see Figure 1), which provides climate control for the driver's area.



**Figure 1: C2045 Generation III front unit
part # VH 10894391**

Description continued on page 3

Old style folding air filter



Figure 2 a: Filter folding downwards for removal and reinstallation



Figure 2c: Top view – filter gauze secured by wire cross. Hinge located at bottom



Figure 2e: Bottom view – filter gauze secured by mesh. Hinge located at bottom

New style folding air filter

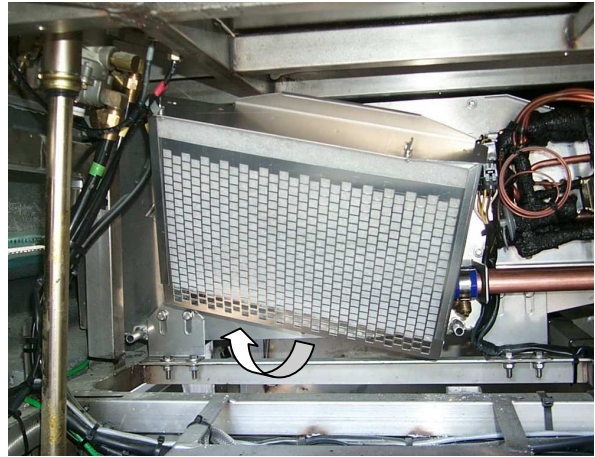


Figure 2b: Filter folding upwards for removal and reinstallation



Figure 2d: Top view – filter gauze secured by mesh. Hinge located at top



Figure 2f: Bottom view – filter gauze secured by mesh. Hinge located at top

Continued from page 1.

2. The unit has a two-piece hinged type air filter that can be removed in its entirety from the vehicle. This makes it easier to either clean the filter gauze or to replace it (see Figure 2a and 2b) promoting periodical maintenance.
3. As a result of feedback from the field Carrier/Sütrak have made design changes to the filter frame in an effort to improve operation and serviceability of the assembly.

The changes include a revised hinge and a different way of retaining the filter gauze (see Figures 2b, 2c, 2d and 2e).

A new filter assembly will be offered by Carrier/Sütrak as a free service replacement part for the old frame on the units mentioned in the application chart.

4. Refer to the procedure in this Bulletin for replacement/cleaning instructions.

PARTS AND PRODUCTS:

Part references			
Old part	New part	Description	Qty.
Carrier 10.28.15.089	VH 11036874	Front unit air filter assembly, folding, complete	1

- Old and new parts are interchangeable, but only the new will be offered for service replacement.
- New parts may be obtained from your nearest ABC Customer Care & Parts Source dealership.
- Parts and products disposition: discard according to applicable environmental regulations.

PROCEDURE: To replace the front unit air filter

1. General:

- There are no specific job requirements to change and/or clean the filter.
- For more information refer to the Operator's Guide Book

2. Special tools, equipment or services:

- No special tools, equipment or services are required.

3. Preparations:

- Park the coach on a level surface with the front wheels straight.
Apply the parking brake and shut down the engine.
- Switch off all systems and turn off the battery master switch.
- Put a "DO NOT OPERATE" tag on the instrument panel.
- Read the entire procedure before beginning to work.

CAUTION: Observe safe shop practices at all times

4. To replace the driver's front unit air filter assembly:

- 1) Open the door giving access to the windshield washer tank and the driver's compartment HVAC unit (see Figure 3).



Figure 3: Access to driver's HVAC front unit

- 2) Locate the air filter assembly (Figure 4).

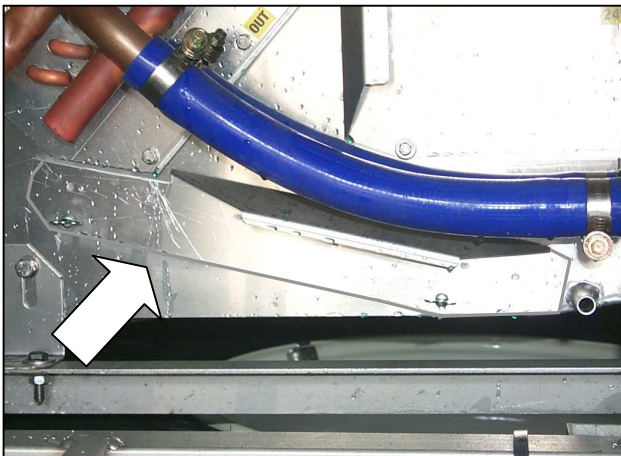


Figure 4: Driver's HVAC front unit air filter assembly

- 3) Undo the twist locks (winged studs) left and right (see Figure 5).

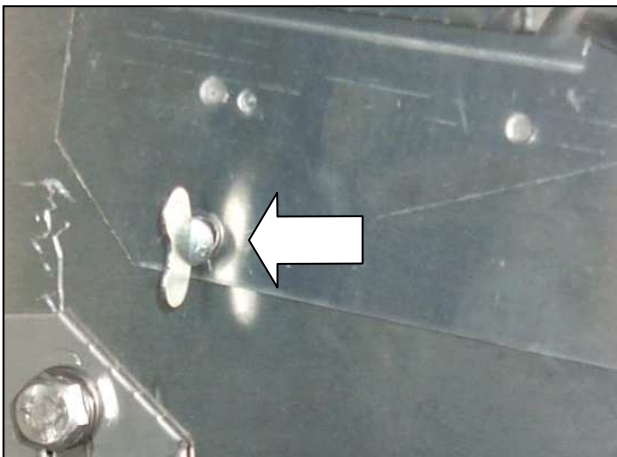


Figure 5: Front unit air filter assembly twist lock (left hand shown)

- 4) Pull out the old filter assembly and remove it from the coach.
- 5) Install the new filter assembly with the filter hinge facing upwards (see Figure 6).

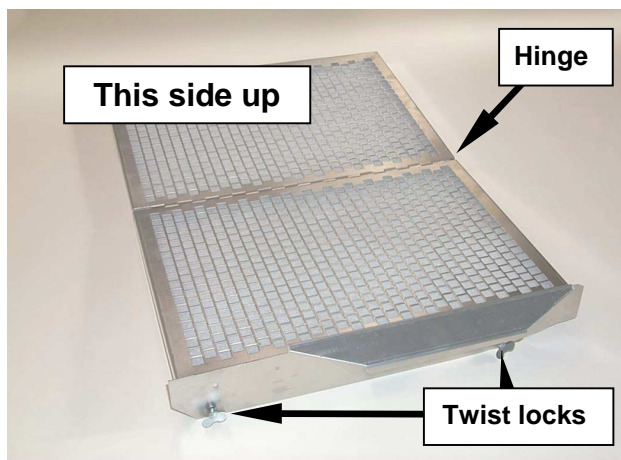


Figure 6: Filter hinge facing upwards

- 6) Secure the assembly in the front unit housing with the twist locks.
- 7) Close the access door.

5. To replace the driver's front unit air filter gauze VH 10736678:

- 1) Remove the filter assembly from the driver's front unit.
- 2) Fold the filter.
- 3) Slide-out the filter gauze back-up frames one by one (see Figure 7).



Figure 7: Filter gauze back-up frame

- 4) Remove the old gauze.
- 5) Cut new filter gauze to size (one piece).
- 6) Install the new gauze.
- 7) Reinsert the back-up frames.

- 8) Reinstall the filter assembly in the driver's front unit.

6. To clean the filter gauze:

- 1) Remove the filter gauze from the frame as explained in part 5 of this procedure "To replace the driver's front unit air filter gauze."
- 2) Shake out excessive dirt and grit.
- 3) Wash in luke-warm water and if extremely dirty, use a mild laundry or dishwasher detergent.
- 4) Rinse with clean water and shake out excessive water.

NOTE: Do not wring or squeeze.

NOTE: Be sure gauze is completely dry before installing.

- 5) Reinstall gauze in filter frame.

Procedure complete.

ATTACHMENTS:

Carrier/Sütrak Technical Bulletin #GB 06-002 "Van Hool C2045 front box filter".

DISCLAIMER:

The procedures contained herein are not exclusive. Van Hool cannot possibly know, evaluate, or advise the transportation industry of all conceivable ways in which a procedure may be undertaken or of the possible consequences of each such procedure. Other procedures may be as good, or better, depending upon the particular circumstances involved.

Each carrier who uses the procedures herein must first satisfy itself thoroughly that neither the safety of its employees or agents, nor the safety or usefulness of any products, will be jeopardized by any procedure selected.

SERVICE INFORMATION:

Service Bulletins are issued to supplement or supersede information in the Van Hool manuals. Note Service Bulletin number, date and subject on the register at the end of the relevant chapter(s). File Service Bulletin separately for future reference.

WARRANTY INFORMATION:

1. Claim references:

- Causal part: Carrier part # 10.28.15.089
- Job code: E50537V

2. Terms and conditions:

Parts:

- Supply: parts may be obtained free of charge from your nearest ABC Customer Care & Parts Source dealership.
- Disposition: discard according to applicable environmental regulations.

Labor allocation: None, as the filter assembly should be replaced during maintenance interval.

Campaign expiration date: Service Bulletin issue date + 6 months.

Material handling: Contact ABC Customer Care & Parts Source for guidance.

THIS PAGE HAS BEEN LEFT BLANK INTENTIONALLY

Technical BULLETIN



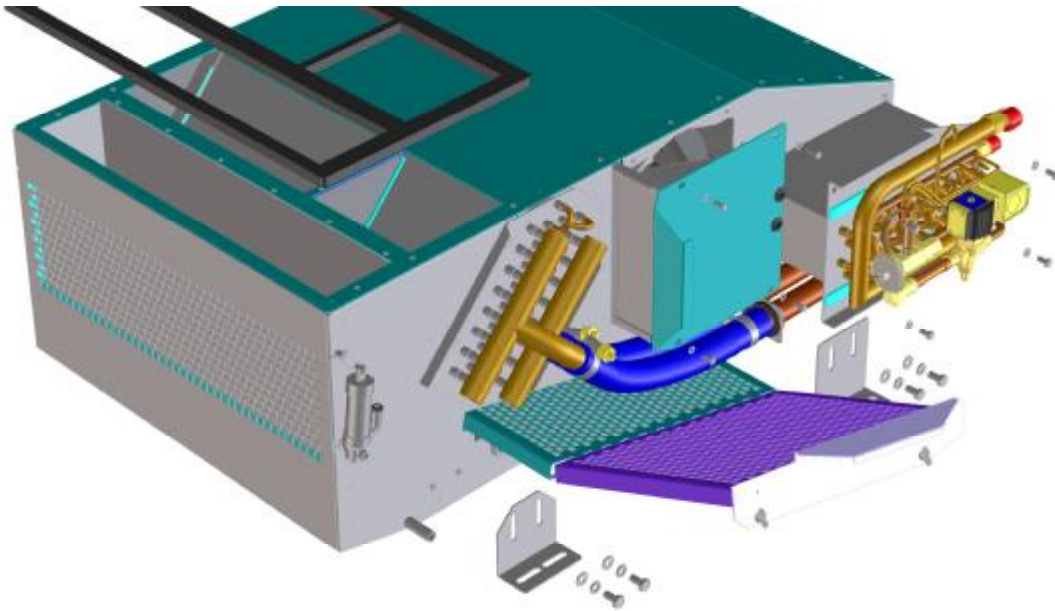
Date: 08 February 2006
Distribution:
Subject : Van Hool C2045 FRONT BOX FILTER

No.: GB 06-002
Category: Product Information
Department: Customer Quality

Part number

05,08,05,009 Van Hool C2045 Front Box

Picture 1 – Front box assembly



Description of product improvement

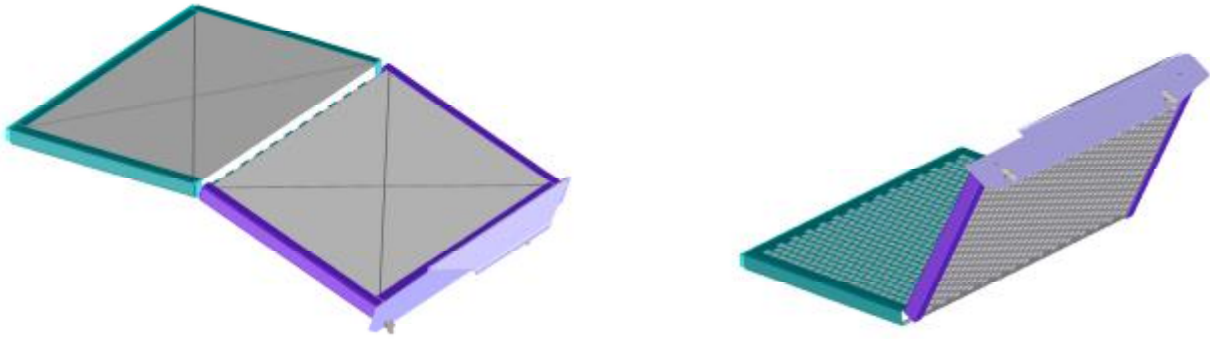
A modification of the air filter assembly has been carried out to improve filter accessibility and support. The hinge has been relocated and a back-up frame has been added.

New parts availability and installation

Carrier Sutrak will provide Free of Charge a replacement for the old-design filter assembly.

For replacement of the filter, no labour allowance will be provided , as this operation can be carried out during regular maintenance, which requires the same effort as cleaning the filter.

Pictures 2 & 3 – Old filter assembly on the left and new assembly on the right - part # 67,99,02,001-00



Product improvement starting date

This product improvement has been implemented starting with the Carrier/Sütrak July 2005 supplies to the Van Hool production plant.

Van Hool C2045 units eligible for an exchange filter assembly

Vehicles shipped with the above front box between April 2004 and July 2005.

.

For more information contact the Carrier/Sütrak Service Department.