

COACH MODEL : T2140, T2145, C2045, TD925US

DATE : February 02, 2011

SUBJECT : Starter Solenoid : ly 6 ack 8 iode cn Multiplex Coaches only

Sample wiring Diagram

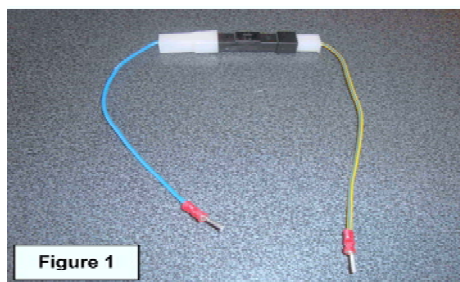


Figure 1

CAUTION: Before working on the starter motor solenoid turn off the battery disconnect switch in the battery compartment

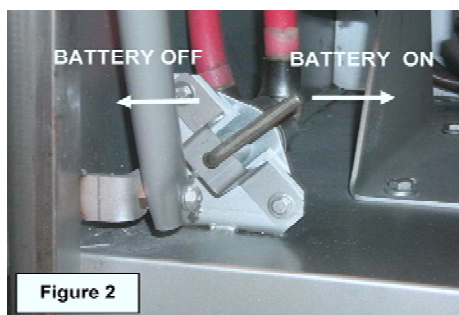
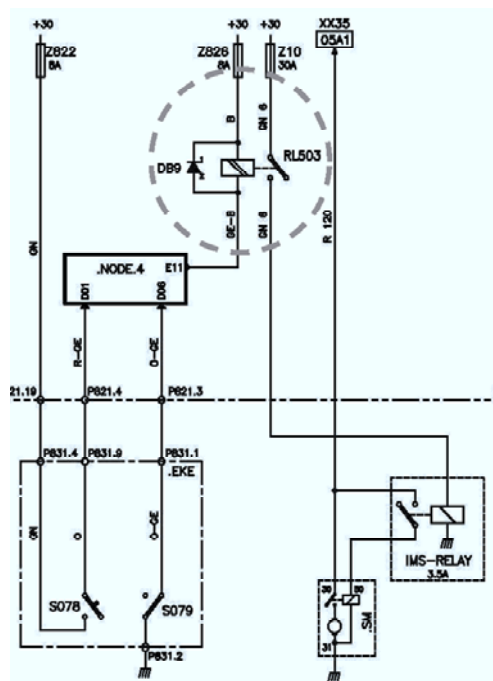
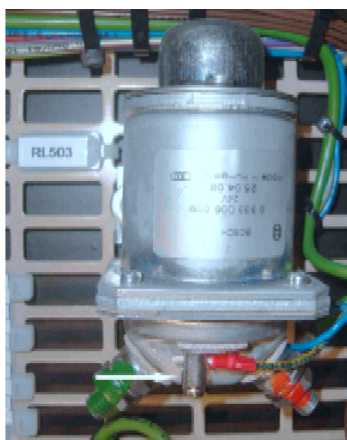


Figure 2



Install the fly back diode blue and yellow-blue cables into the primary cable posts, matching the primary plus and ground cable colors, tighten the mounting screws.

Attach the diode to the junction box grid with a cable tie as shown below

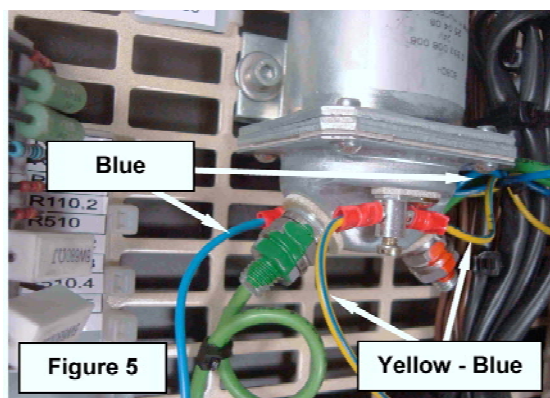


Figure 5

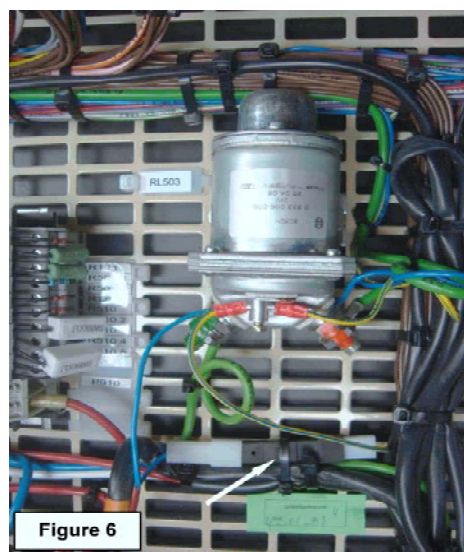


Figure 6

The information provided above describes how to install the fly back diode in Van Hool coaches that are equipped with Multiplex system. More information can be found in the appropriate Van Hool Service Bulletin SB1234.