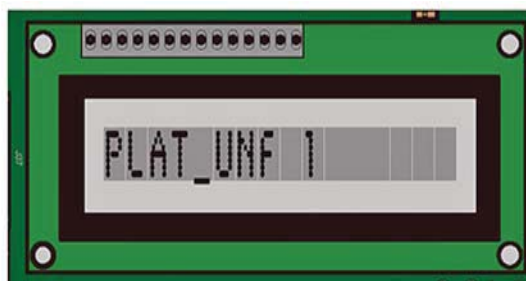


COACH MODEL : C2045, T-2145 With Braun lifts

DATE : 10/25/2012

SUBJECT : Troubleshooting Code on Braun Control Board After Replacement

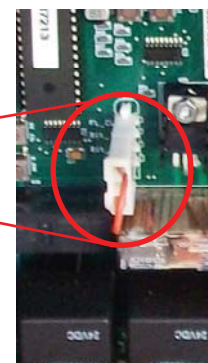
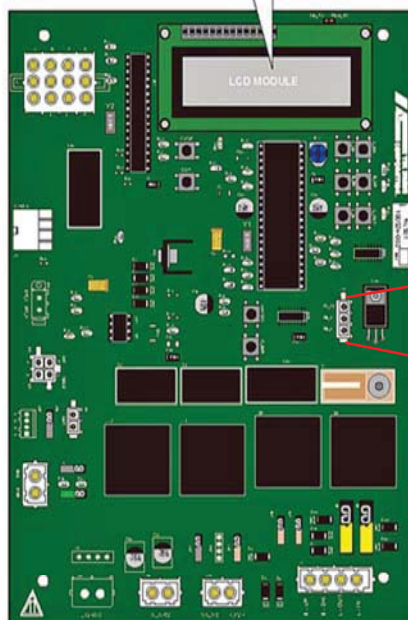
When all of the harnesses are correctly connected to the control board, the values shown in the chart below will display when the corresponding action is taken (1) will appear on the LCD module as shown in the illustration at right. If any other value appears on the LCD screen during the specific diagnostic procedure, verify that the correct harness is properly connected to both the control board and the associated lift harness. Repeat the harness diagnostic procedure. If an incorrect value is still present after checking the harness and connections, contact The Braun Corporation Product Support Department at **1-877-262-8633**.



Hand-held Pendant



All basic functions (UP, DOWN, STOW and DEPLOY) should show a value of (1) when activated via the hand-held pendant.



LCD Display	Stowed	Full Out	Moving Up		At Floor Level	Moving Down		Ground Level	1" Below Floor Level
			Inner Roll Stop Locked	Inner Roll Stop Unlocked		Inner Roll Stop Locked	Inner Roll Stop Unlocked		
F_IN SW	1								
FOUT SW		1	1	1	1	1	1	1	1
FLV SW					1				
IN_RL_ST				1	1		1		1
1_IN_BLW				1			1		1
OBAR SW	= 1 When Outer Barrier is Activated								
PLAT_UNF	= 1 When Platform is Unfolded								
BEL_ST SW	= 1 When Lift is at or Below Stow Level								

NOTE: We have discovered a quick trouble shooting step when replacing a control board on a Braun NL-501 type lift. If the existing board is bad and requires a new one, a common mistake is not replacing the jumper harness on the new board. This can cut down on hours of trouble shooting because it causes problems in lowering and stowing of the lift, symptoms which would seem otherwise unrelated to a jumper.