



SERVICE BULLETIN No. 1138

Circulate to listed addressees

COACH MODEL	: C2045
BULLETIN TYPE	: Product Improvement
MANUAL & SECTION	: N/A
PARTS BOOK REVISION	: No
DATE	: May 24, 2004
SUBJECT	: Evaporator drain hoses
TERMS & CONDITIONS	: No claims will be accepted with reference to this Bulletin.

APPLICATION:

The new evaporator drain hose installation has been cut into production as from following units:

Model	Engine	VIN
C2045	Cummins	45440 →
	Detroit Diesel	45930 → 45934, 45955 → 45979

DESCRIPTION:

In an effort to eliminate water traps and avoid possible condensation in the luggage compartment, Van Hool have revised the evaporator drain hose installation on 2003 production Commuter Coaches (see Figure 1). The aim has been to route as little drain hoses as possible through the luggage compartment.

NOTE: As before, all drain hoses are routed from the parcel rack mounted evaporators to the luggage compartment through window (sash) posts (see Figure 2).

The changes include:

1. In the parcel racks, the evaporator drains have been moved further to the rear of the coach. They are now located above the condenser compartment (LH) and above luggage door #4 (RH).
2. The rear most of the LH evaporator drains goes down into the condenser compartment and leaves the coach through the condenser compartment floor (see Figures 3.1 and 3.2). The fore most of the LH evaporator drains enters the luggage compartment half way door #3 (see Figure 4) and is then routed alongside the passenger compartment floorboard to the condenser compartment where it leaves the coach through the floor (see Figure 5).

Description continued on next page.

Service personnel: please read, initial and circulate.

Service Manager	Parts Manager	Warranty Administrator	Workshop Foreman	Service Technician

Continued from page 1.

3. The fore most of the RH evaporator drains enters the luggage compartment half way door #3 (see Figure 6) and is then routed through a round tube, which has been welded alongside a diagonal chassis member to the an opening in the center of the luggage compartment floor (see Figure 7).
The rear most of the evaporator drains enters the luggage compartment half way door #4 and is routed alongside the coach floor to the drive axle suspension well (see Figure 8)
4. In the luggage compartment, all exposed drain hoses have been insulated (see typical examples indicated by bold arrows, Figures 4, 6 and 8).
5. All holes in the luggage compartment floor through which the drain tubes pass, have been sealed with adhesive (see Figure 9).

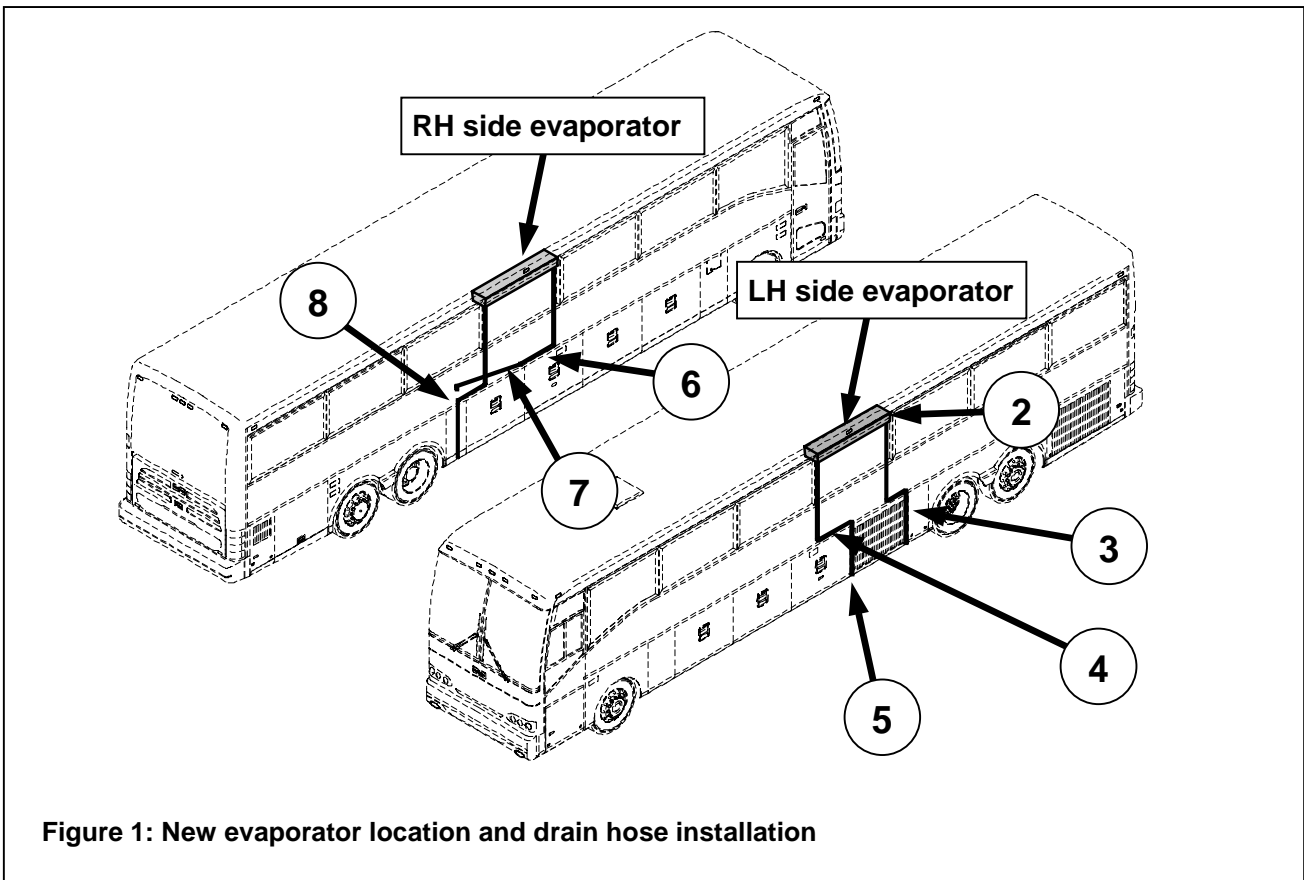


Figure 1: New evaporator location and drain hose installation

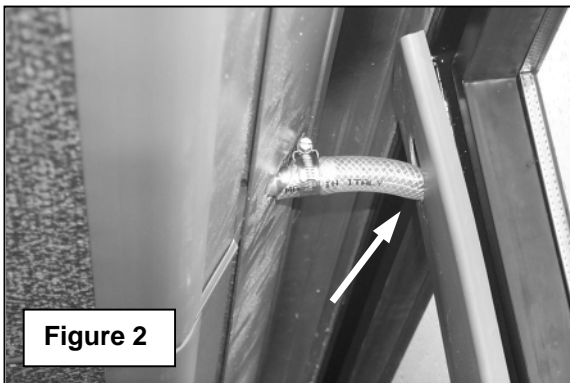


Figure 2



Figure 3.1

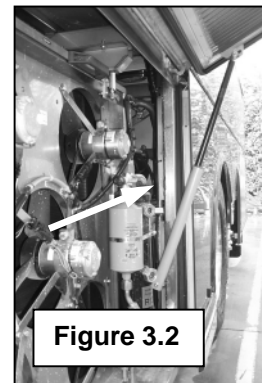
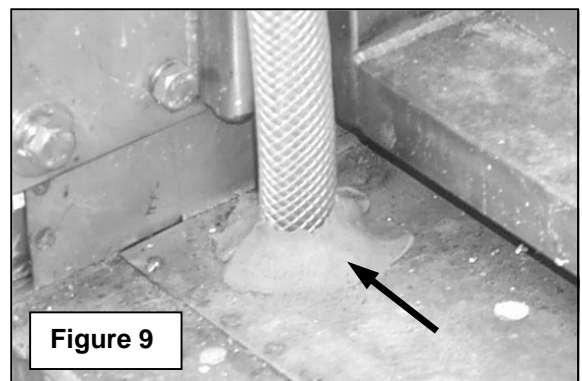
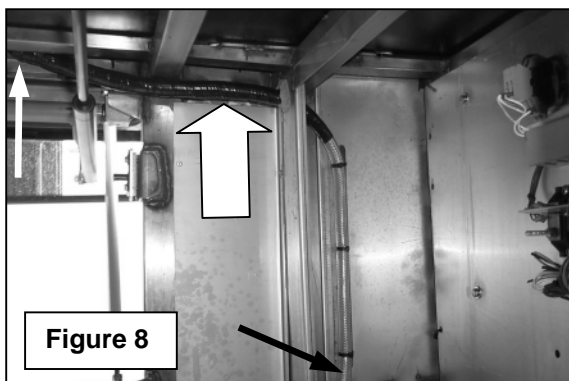
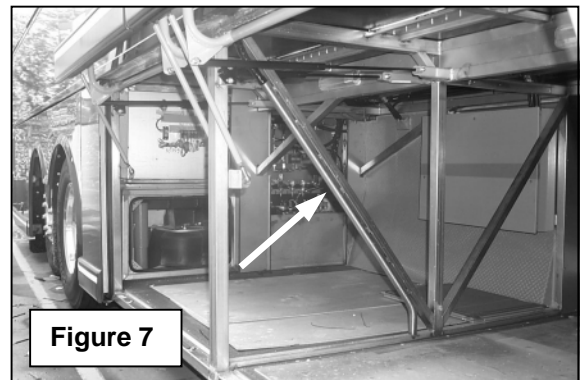
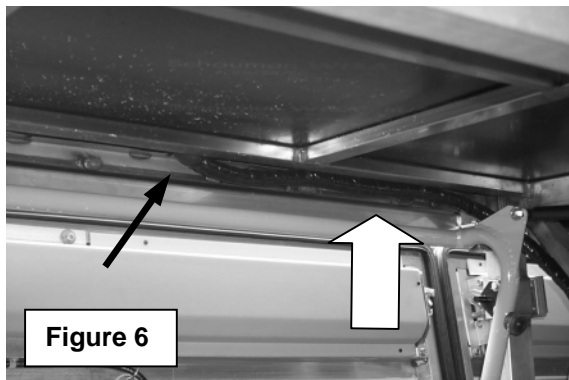
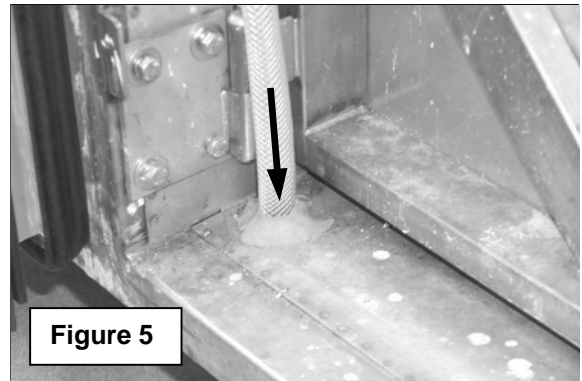
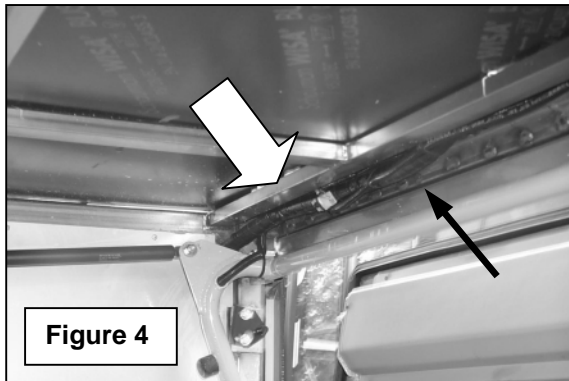


Figure 3.2



PARTS AND PRODUCTS:

- Regarding the product improvement subject of this Bulletin, no parts information will be made available in the C2045 Spare Parts Manual.

PROCEDURE:

- The procedures to service the evaporators remain unchanged.

SERVICE INFORMATION:

Service Bulletins are issued to supplement or supersede information in the Van Hool manuals. Note Service Bulletin number, date and subject on the register at the end of the relevant chapter(s). File Service Bulletin separately for future reference.

THIS PAGE HAS BEEN LEFT BLANK INTENTIONALLY