

<b>ADDRESSEES</b>	: ABC Customer Care and Parts Source Owners and operators of coaches listed under 'Application'
<b>VEHICLE MODEL</b>	: TD925US
<b>VEHICLE SECTION</b>	: Equipment
<b>BULLETIN TYPE</b>	: Field Change Program
<b>DATE</b>	: March 1st, 2010
<b>SUBJECT</b>	: <b>Fire suppression system – installation change</b>
<b>TERMS &amp; CONDITIONS</b>	: Refer to the warranty section further in this Bulletin.

### APPLICATION:

Model	Engine	VIN	Action
TD925US	Cummins ISM02	42301→42318	Check installation and change as required
	Cummins ISM07	42319→ 42351	Change installation

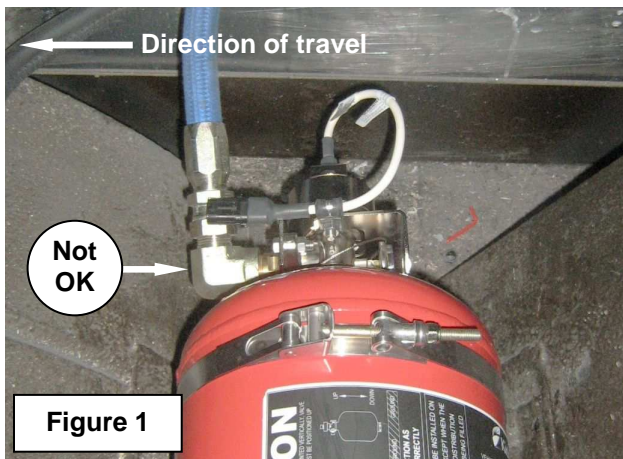
### DESCRIPTION:

- To ensure the performance of the engine compartment fire suppression system, it is necessary to make changes to the installation of the fire extinguisher assembly.
- The extinguisher assembly, which is located between the wheel wells of the drive and tag axles should be rotated through 180° about its axis as explained the step-by-step instructions further in this Bulletin.

Figure 1 shows the orientation of the assembly on the affected units.

Figure 2 shows the installation as prescribed by the system's supplier.

For more details on fire extinguisher construction and orientation, refer to the generic text on page 2 of this Bulletin.



## **MATERIAL:**

<b>VH Reference</b>	<b>Description</b>	<b>Qty.</b>
637100150	P-clamp, to accept 1-1/8" diameter hose	1
612203600	Bracket, hose mounting, 90°	1
660229755	Bolt, M6 x 1 x 25 mm, stainless, grade A2	2
660636302	Washer, spring, M6, stainless, grade A2	2
660623507	Washer, flat, 6.4 x 12.5 x 1.6 mm, stainless, grade A2	2
660209922	Nut, M6 x 1.0 mm, stainless, grade A2	2

- Parts may be purchased from your nearest ABC Customer Care & Parts Source service center.
- Parts/Waste disposal: discard old parts and products according to applicable environmental regulations.

## **ABOUT FIRE EXTINGUISHER ASSEMBLY VH11047158:**

This fire extinguisher consists of a cylinder, valve, gauge shield, discharge adapter, anti-recoil cap and an electrically operated control head with an electric actuator, all supplied as a single assembly.

A steel mounting bracket is used to install the extinguisher assembly in a horizontal position between the wheel wells of the drive and tag axles.

This bracket also contains two band-clamps to secure the fire extinguisher, and a threaded storage point to secure the anti-recoil cap when not in use.

When installing the extinguisher assembly, great care should be taken to make sure that siphon tube inside the cylinder is oriented down as indicated by the arrow on the valve body (Figure 3).

**CAUTION:** The extinguisher assembly will not function as intended if oriented incorrectly.

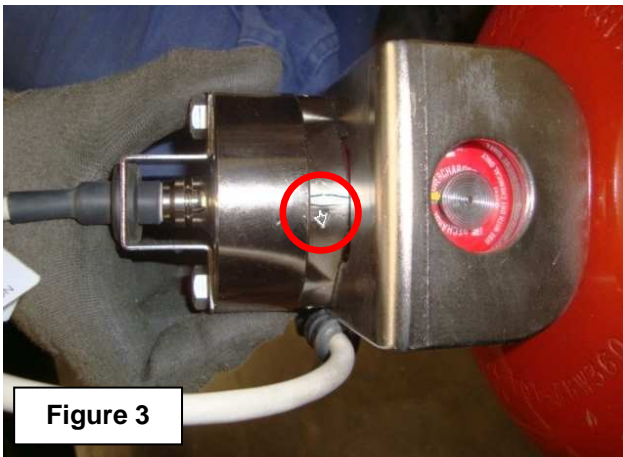


Figure 3

## **PROCEDURE:** To change the orientation of the fire extinguisher assembly for the fire suppression system

### **1. General:**

- Job technician's qualifications/expertise: general automotive.
- For more information refer to the service literature that comes with the coach.
- This job does not require special tools, equipment nor services.

## 2. Preparations:

- Park the coach on a level surface with the front wheels straight. Apply the parking brake and shut down the engine.
- Switch off all systems and turn off the battery master switch.
- Put a “DO NOT OPERATE” tag on the instrument panel.
- Read the entire procedure before beginning to work.

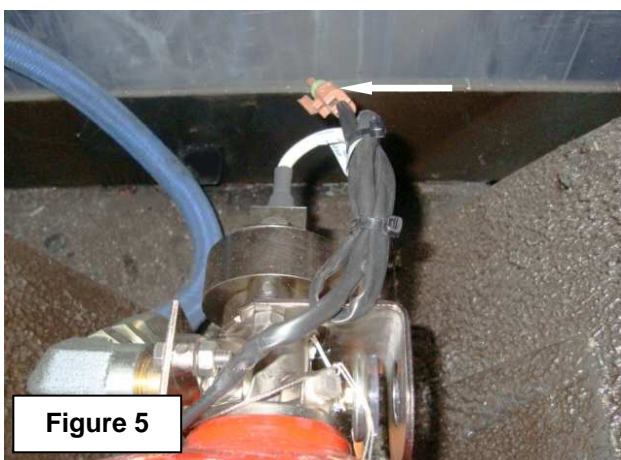
**CAUTION: Observe safe shop practices at all times.**

## 3. To change the orientation of the fire extinguisher assembly:

- 1) The fire extinguisher assembly can be accessed through a hatch in the luggage compartment.  
On the left-hand side of the coach, open the luggage compartment door above the drive axle (Figure 4).  
Undo and remove the four Allen bolts securing the trap door (arrow, Figure 4).  
Before removing the trap door, take note of how it has been installed first.

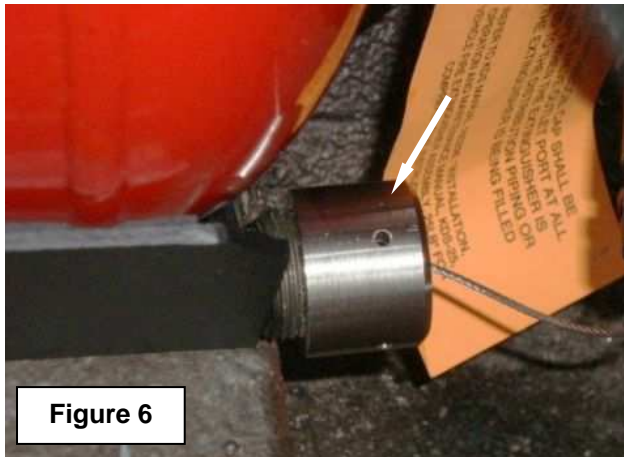


- 2) Working on the fire extinguisher assembly, cut loose the actuator and system (coach) cables by removing tie wraps as required.  
Disconnect the actuator cable from the system cable (arrow, Figure 5).

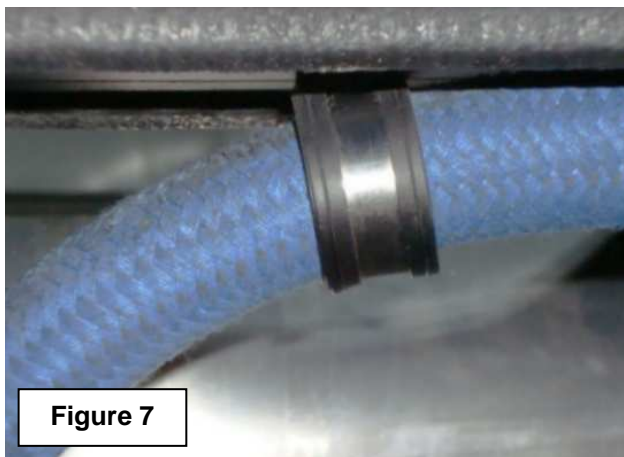


*Continued on next page.*

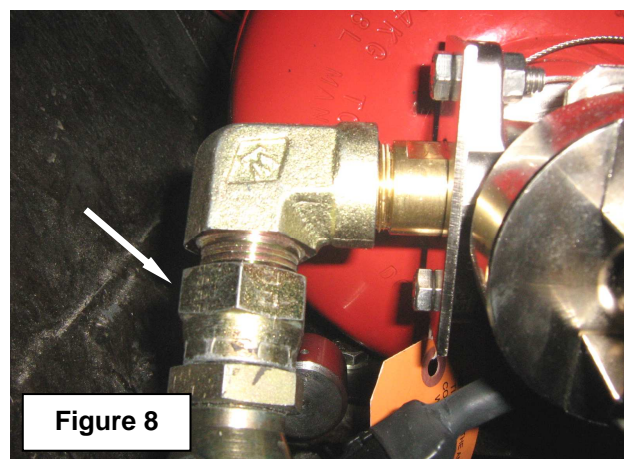
- 3) Undo and remove the anti-recoil cap from its storage point (Figure 6).



- 4) Working near the fuel tank, undo and remove the fasteners securing the hose P-clamp to the chassis (Figure 7).  
Separate the P-clamp from the hose.



- 5) Holding the elbow fitting with one wrench and working the hose nut with another, disconnect the hose from the extinguisher control head (Figure 8).  
Cap the hose and the elbow fitting to prevent any ingress of debris.

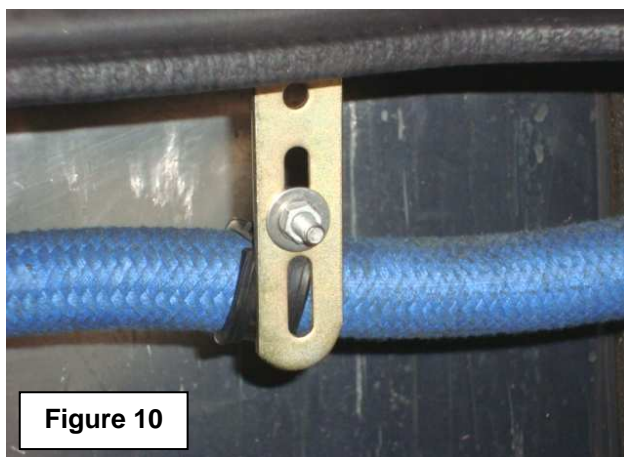




- 6) Slacken the band clamps securing the fire extinguisher assembly to the mounting bracket.

**CAUTION:** The fire extinguisher assembly has a considerable weight. To avoid personal injury and/or damage to the vehicle or component, work with an assistant to handle it.

- 7) Rotate the assembly through, 180° about its axis (Figures 1 and 2).  
Make sure the arrow on the valve body points down (Figure 3).
- 8) Re-torque the band clamps to 20 lb.ft.
- 9) Uncap the hose and the elbow fitting.  
Reconnect the hose to the extinguisher control head by manually running the hose nut up the elbow fitting thread until fully seated.  
Holding the elbow fitting with one wrench and working the hose nut with another tighten the nut further  $\frac{1}{2}$  to  $\frac{3}{4}$  turns.
- 10) Reattach the hose to the chassis as shown in Figures 9 and 10 using the parts from the material's list.  
To install bracket #612203600 use can be made of the hole drilled to accept the fasteners of the old P-clamp that was removed in step 4 of this procedure.  
Tighten the fasteners to a torque of 80 lb.in.



- 11) Reattach the anti-recoil cap to its storage point.  
Secure hand tight.

- 12) Reconnect the control head wiring to the chassis wiring.  
Secure with tie wraps as required.
- 13) Close and secure all access doors.

*Procedure complete.*

### **DISCLAIMER:**

The procedures contained herein are not exclusive. Van Hool cannot possibly know, evaluate, or advise the transportation industry of all conceivable ways in which a procedure may be undertaken or of the possible consequences of each such procedure. Other procedures may be as good, or better, depending upon the particular circumstances involved.

Each carrier who uses the procedures herein must first satisfy itself thoroughly that neither the safety of its employees or agents, nor the safety or usefulness of any products, will be jeopardized by any procedure selected.

### **WARRANTY:**

#### **1. Terms and conditions:**

Van Hool will accept warranty claims for this repair as follows:

##### **Parts:**

- Supply: parts will be supplied through regular channels, free of charge.
- Disposal: discard parts according to applicable environmental regulations.

**Labor allowance:** 1.0 (one) hour of labor will be awarded per coach repaired.

**Campaign expiration date:** Service Bulletin issue date + 6 months.

#### **2. Claim references:**

- Causal part: 11047158
- Job code: M55426H

**Claim submission:** Contact Van Hool After-sales Technical Services for guidance.

**Monitoring and performance:** The claim records pertaining to this Bulletin will be used to determine that the remedy has been executed in accordance with the manufacturer's instructions and to evaluate the status of this Field Change Program.